

说明

感谢您使用我公司生产的产品。

本零件图册适用于我公司生产的LG160DT内燃平衡重式叉车，以便用户在修理更换叉车零部件时，从中查找出所需的零件名称、结构及安装位置，并作为订货参考。

在订货时，必须说明原叉车的型号及出厂日期，并根据本图册，说明零件的详细名称、标号、数量及完整的代号。

我公司叉车根据用户和生产发展，将不断地进行改进，故图册内容可能在一定的时期将有更动，待再版时予以修改，敬请用户注意。

本图册不可避免的存在缺点，我们热诚欢迎用户提出宝贵意见。

本图册为第2版,第0次修改。

2012年5月

Introduction

Thank you for selecting our products.

This parts catalogue is applied for the LG160DT

Internal Combustion Counterbalanced Fork Lift Truck by our plant. It is intended for users to identify the description, the structure and the assembling location of the parts replaced or rep-aired, and to put order on them.

When ordering parts, it is necessary to state the model of the forklift, and manufacturing date, and the description, specification, quantity and code based on this parts book.

Owing to the rapid development of the technology and our continual improvement of product, the information contained in this book may be changed without notice.

For improving our work, customers are sincerely requested to give us comments and suggestions.

Edition 2, Modified 0.

May 2012

查询方法:

- 1.在目录中找到相应的系统或总成;
- 2.翻至所标页数,找到该图;
- 3.在其图中找出所需零部件,以及它所标注的序号;
- 4.根据这个序号,在其后附表中可以查到系统或零件的详细信息.

订购零部件时,务请写清叉车的型号,出厂编号,所需零部件的图号及订购数量.

维修时,请使用原厂家提供的零部件,以确保叉车质量.

Indexing Way:

- 1.Find out the indexing for the system or assembly;
- 2.According to above page, find out the detail drawing for the system or assembly required;
- 3.From the detail drawing, find out the parts and their item numbers;
- 4.According to these item numbers, find out details of these parts of the system or assembly from attached table.

When ordering the parts or components, please indicate the model and series numbers of parts or components you require and their quantity.

When you replace parts or components, please apply the real goods made by our company to ensure the truck's quality.

目录/Contents

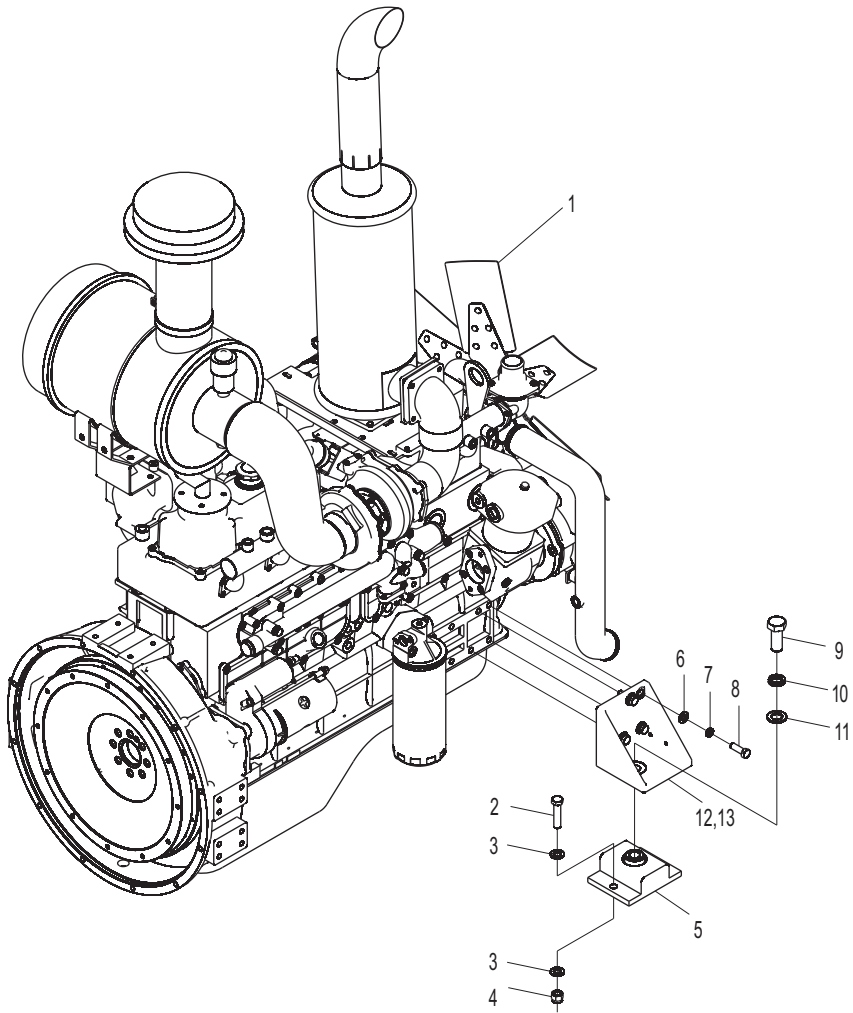
发动机总成/Engine assembly	1
LG160DT	
散热器总成/Radiator assembly	3
LG160DT	
燃油装置总成/Fuel system assembly	5
LG160DT	
驱动桥总成/Drive axle assembly	7
LG160DT	
驱动轮总成/Drive wheel assembly	9
LG160DT	
变速箱总成/ Transmission assembly	11
LG160DT	
转向桥总成/Steering axle assembly	13
LG160DT	
转向轮总成/Steering wheel assembly	17
LG160DT	
转向油缸/Steering oil cylinder	19
LG160DT	
油门操纵/Accelerator pedal	21
LG160DT	
停车制动总成/Parking brake assembly	23
LG160DT	
制动管路系统/Brake pipe system	25
LG160DT	
车架/Frame	29
LG160DT	
覆盖件系统/Mantle system	31
LG160DT	
门架(基本型)/Mast (normal mast)	35
LG160DT	
门架参数表(基本型)/Mast type (normal mast)	37
LG160DT	
滚轮总成/Roller assembly	39
LG160DT	
链轮总成/Sheave assembly	41
LG160DT	
链条总成/Chain assembly	43
LG160DT	
货叉及货叉架(基本型) / Fork & Lift bracket(normal mast)	45
LG160DT	
货叉及货叉架(叉移) / Fork & Lift bracket(Side shift)	47
LG160DT	
起升架总成(叉移) / Lift bracket assembly(Side shift)	49
LG160DT	
起升油缸(基本型) / Lift cylinder(normal mast)	51
LG160DT	
起升油缸(基本型) / Lift cylinder(normal mast)	53
LG160DT	
倾斜油缸总成 / Tilt cylinder assembly	55
LG160DT	

目录/Contents

倾斜油缸总成参数/Tilt cylinder assembly type	57
LG160DT	
倾斜油缸/Tilt cylinder	59
LG160DT	
叉移油缸/Side shifting cylinder	61
LG160DT	
门架起升管路系统(基本型)/Lifting pipe system(normal mast)	63
LG160DT	
门架侧移管路系统(基本型)/Side shift pipe system(normal mast)	65
LG160DT	
门架侧移管路系统/Side shift pipe system	69
LG160DT	
门架叉移管路系统/Side shift pipe system	71
LG160DT	
多路阀管路/Multi-way valve pipe system	75
LG160DT	
功能管路/Function pipe system	77
LG160DT	
液压控制管路/Hydraulic control pipe system	79
LG160DT	
转向管路/Steering pipe system	81
LG160DT	
泵管路/Pump pipe system	83
LG160DT	
驾驶室系统/Cab system	85
LG160DT	
空调系统(选配)/ Air-condition system(Optional)	87
LG160DT	
电气元件总成/ Electric element assembly	91
LG160DT	
驾驶室电气元件总成/ Electric element assembly of cab	93
LG160DT	
电气系统/ Electric system	95
LG160DT	
标牌/ Decal	99
LG160DT	

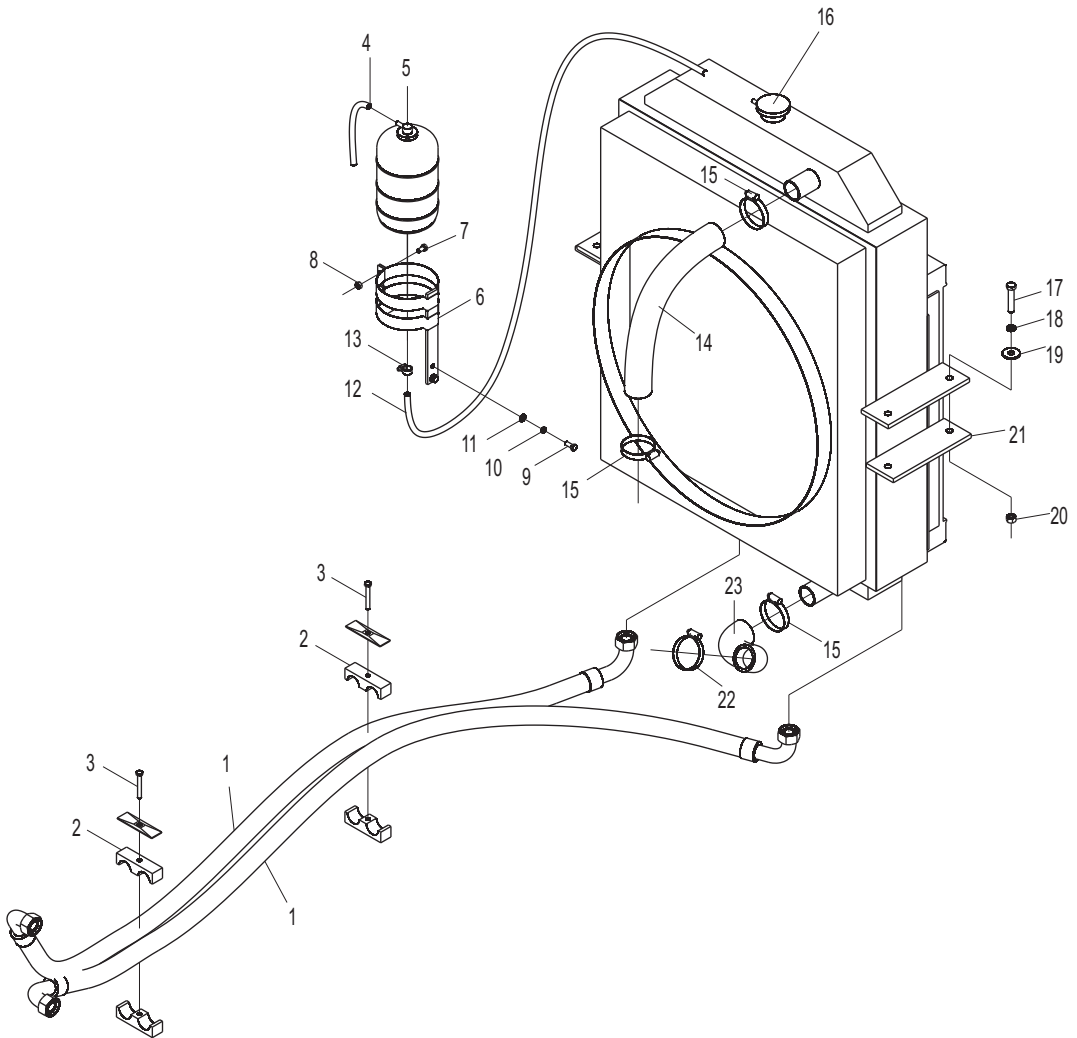
发动机总成/Engine assembly

LG160DT



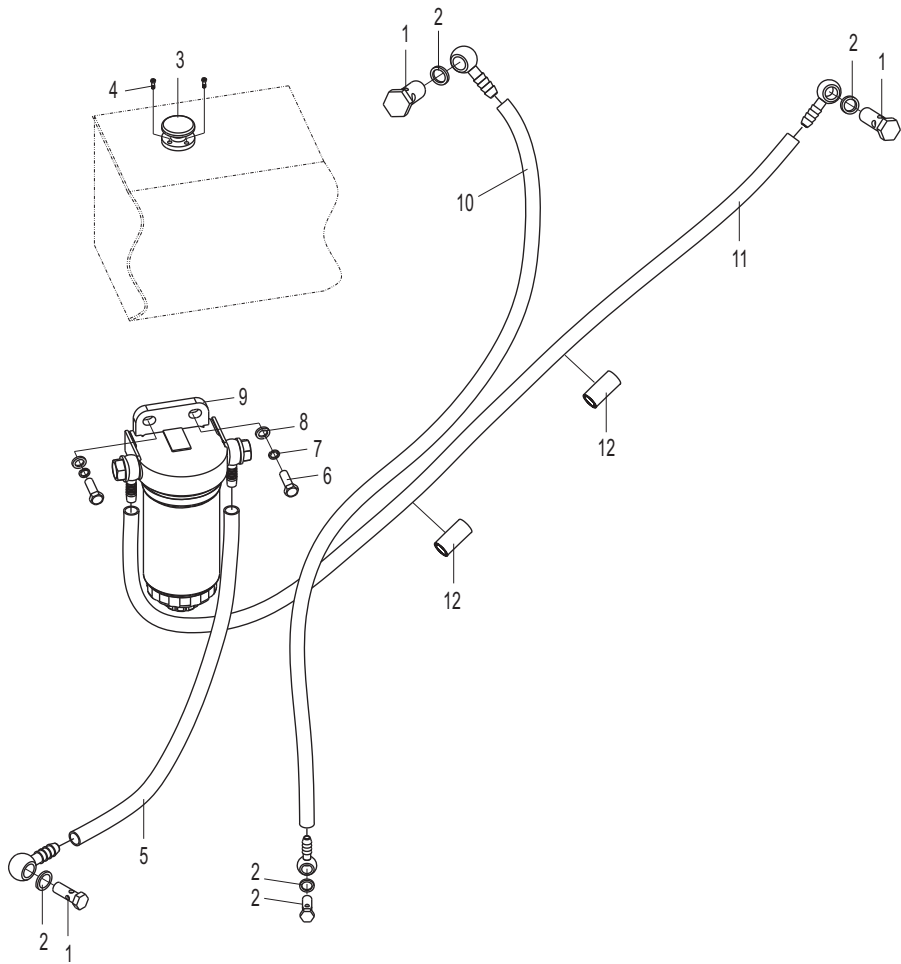
散热器总成/Radiator assembly

LG160DT



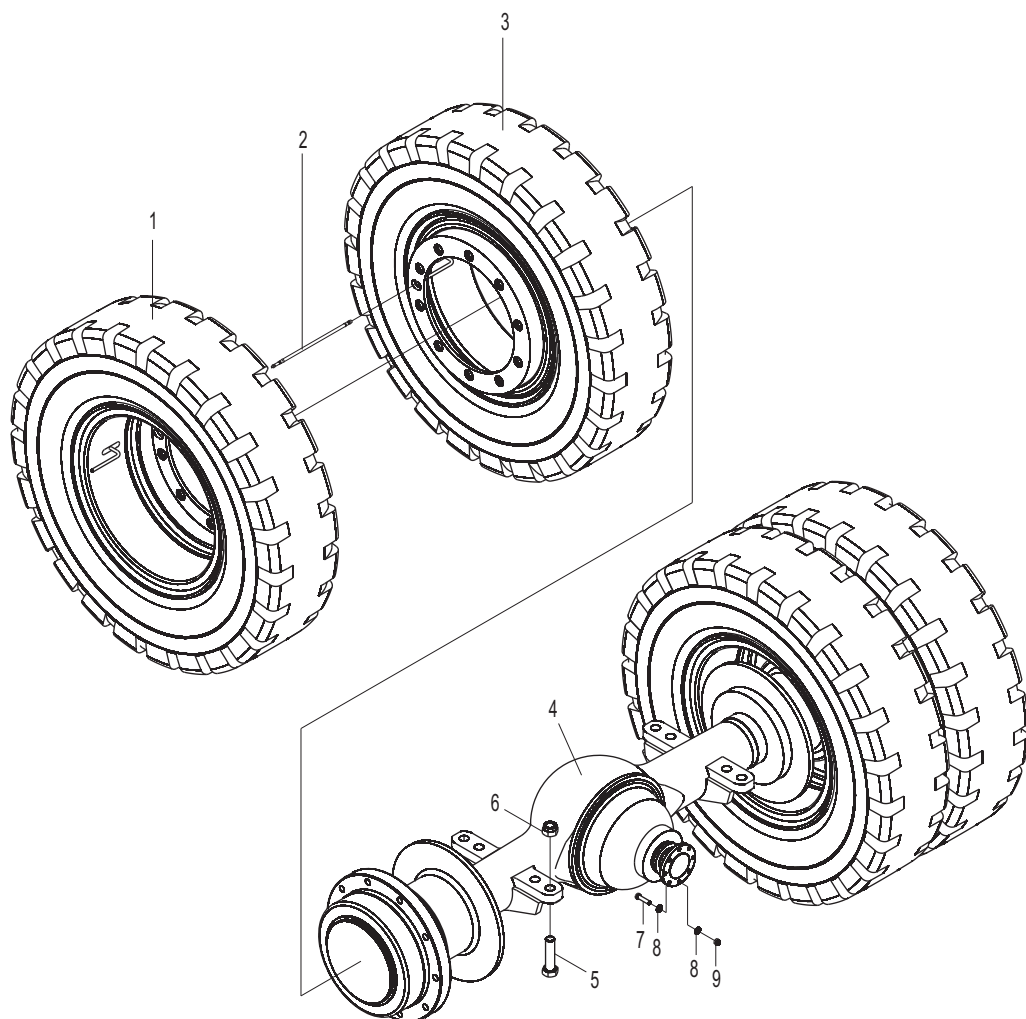
燃油装置总成 / Fuel system assembly

LG160DT



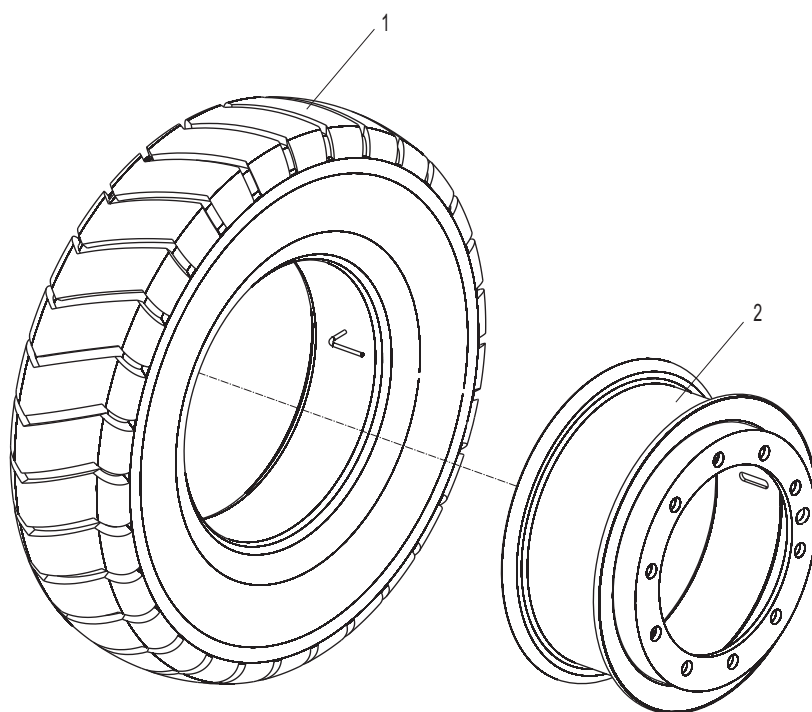
驱动桥总成/Drive axle assembly

LG160DT



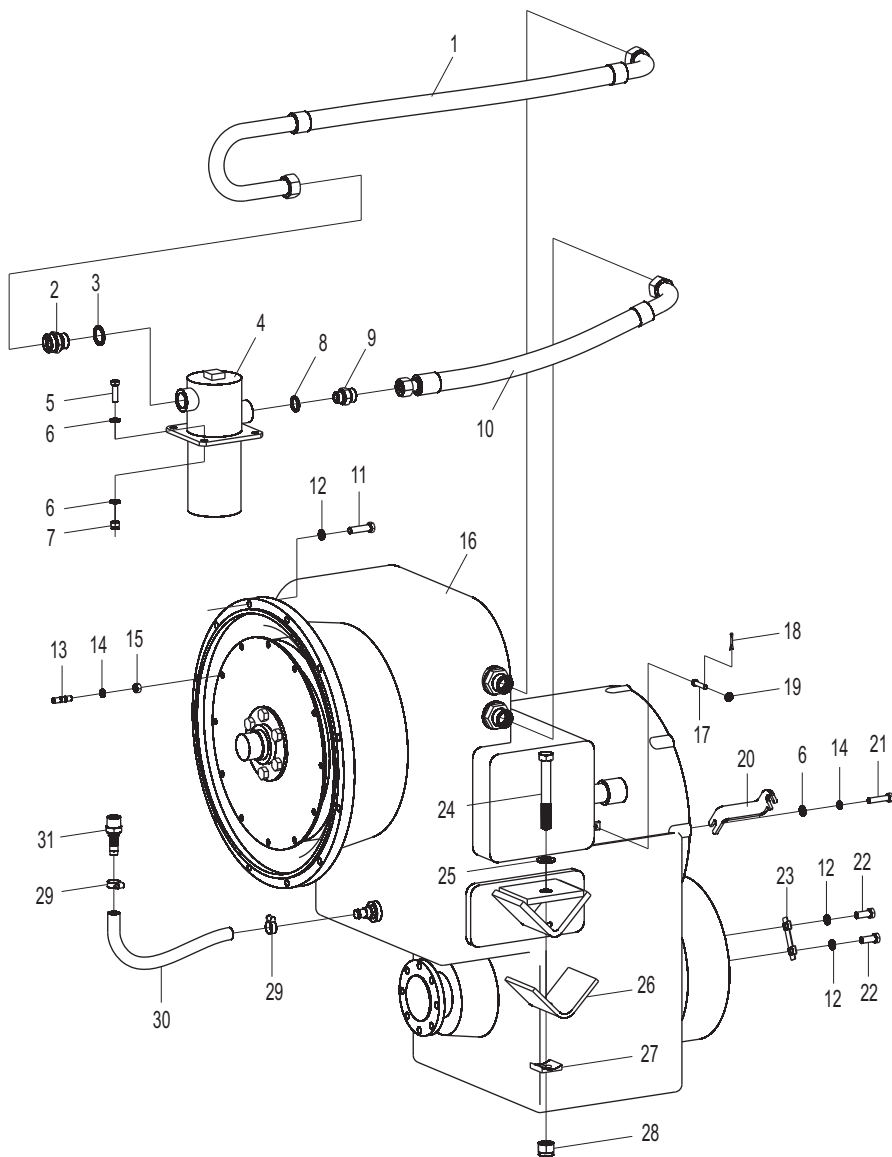
驱动轮总成/Drive wheel assembly

LG160DT



变速箱总成/Transmission assembly

LG160DT



变速箱总成/Transmission assembly

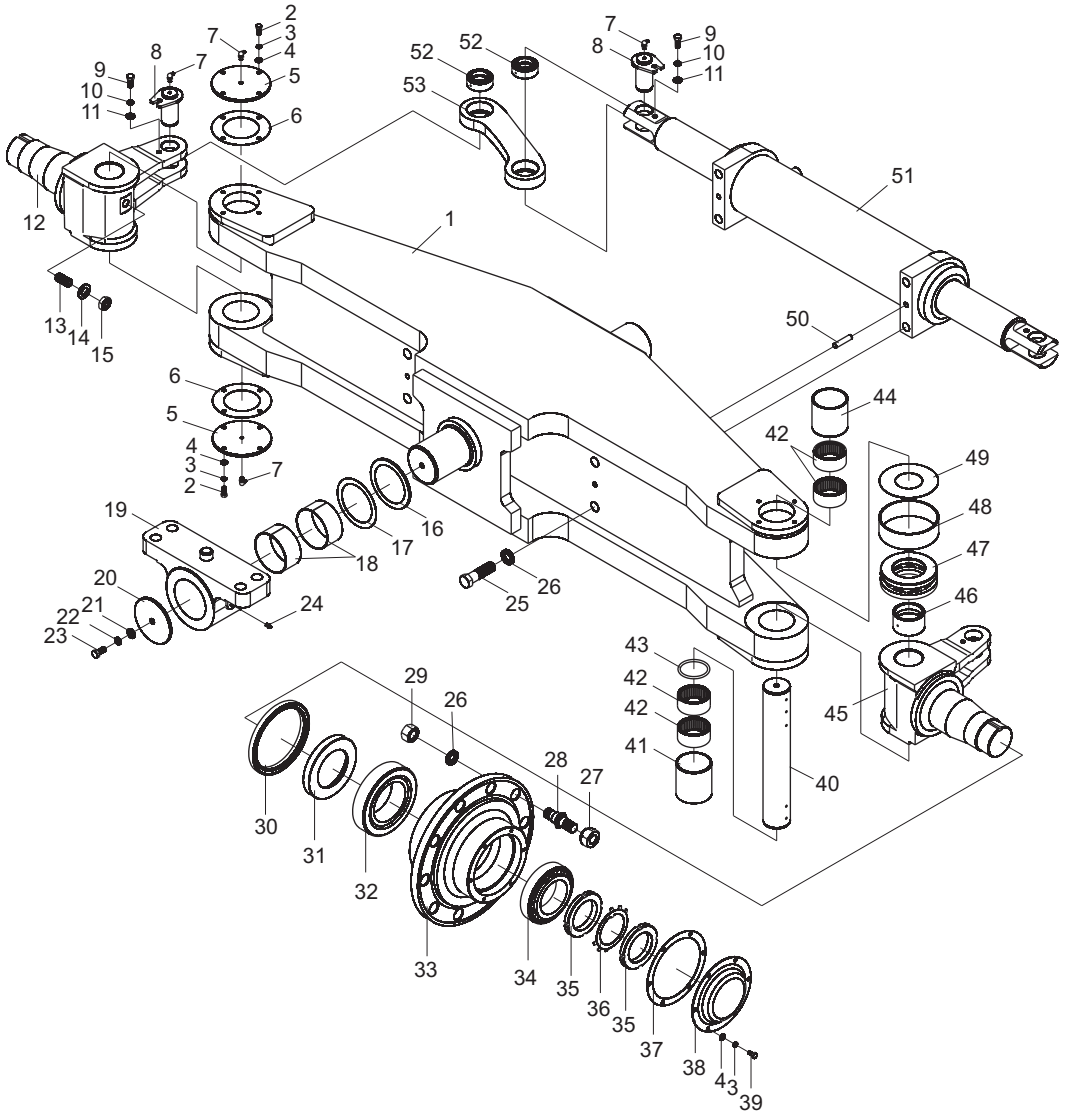
序号 Item No	编 码 Code	图 号 Part No	零部件名称 Description	数量 Q'ty	备 注 Remark
1	17272002705	20401-36Ta180°/ 20491-36T*1W16*900/270°	胶管总成 Hose assembly	1	
2	17601000345	L1CL-36-30D	过渡接头 Adapter	1	
3	56147011701	JB/T982	组合垫圈30 Washer 30	1	
4	30002023300	LG0160DT.02.03.01	滤油器总成 Filter	1	
5	51204101314	GB/T5783	螺栓M10X35 Bolt M10×35	2	
6	51421100115	GB/T97.1	垫圈10 Plain washer 10	5	
7	51341000619	GB/T889.1	螺母M10 Nut M10	2	
8	56147011301	JB/T982	组合垫圈22 Washer 22	1	
9	17601000256	L1CH-27-22	过渡接头 Adapter	1	
10	17272002704	20411-27/20491-36T*2N16 *700	滤油器出油管 Hose	1	
11	51204111514	GB/T5783	螺栓M12X45 Bolt M12×45	12	
12	51401110107	GB/T93	垫圈12 Spring lock washer 12	20	
13	51290105805	GB/T899A型	螺柱M10X1X25 Bolt M10×1×25	12	
14	51401100107	GB/T93	垫圈10 Spring lock washer 10	13	
15	51309000219	GB/T6171	螺母M10X1 Nut M10×1	12	
16	30002020321	LG0160DT.02.03.02	变速箱总成 Transmission	1	
17	51511051602	GB/T882B型	销轴8X40 Pin 8×40	1	
18	51512081201	GB/T91	开口销3. 2X25 Split pin 3.2×25	1	
19	51421090115	GB/T97.1	垫圈8 Plain washer 8	1	
20	30002107619	LG0160DT.02.03-005	固定板 Bracket	1	
21	51204101514	GB/T5783	螺栓M10X45 Bolt M10×45	1	
22	51207115214	GB/T5786	螺栓M12X1. 25X30 Bolt M12×1.25×30	8	
23	30002106401	LG0160DT.02.03-010	止动垫圈 Tab washer	4	
24	51203143014	GB/T5782	螺栓M18X140 Bolt M18×140	2	
25	51421140115	GB/T97.1	垫圈18 Plain washer 18	2	
26	30002113902	LG0160DT.02.03-006	橡胶垫 Rubber plate	2	
27	30002116400	LG0160DT.02.03-007	弧形垫圈 Washer	2	
28	51341001419	GB/T889.1	螺母M18 Nut M18	2	
29	56171000301	JB/T8870	喉箍d32 (20~32) Clip d32(20~32)	2	
30	30002109200	LG0160DT.02.03-008	胶管 Hose	1	
31	37201000587	LG0160DT.02.03-009	软管接头 Adapter	1	

转向桥总成/Steering axle assembly

序号 Item No	编 码 Code	图 号 Part No	零部件名称 Description	数量 Q'ty	备 注 Remark
1	30003035005	LG0160DT.03.01.01	转向桥体焊合 Steering axle	1	
2	51204091014	GB/T5783	螺栓M8X20 Bolt M8×20	16	
3	51401090107	GB/T93	垫圈8 Elastic washer 8	28	
4	51421090115	GB/T97.1	垫圈8 Washer 8	28	
5	30003118504	LG0160DT.03.01-005	端盖 Hub cap	4	
6	30003134902	LG0160DT.03.01-006	纸垫 Washer	4	
7	56203000201	GB/T7940.2	油杯90° M8X1 Grease nipple	8	
8	30003025005	LG0160DT.03.01.04	销轴焊合 Link pin	4	
9	51204101114	GB/T5783	螺栓M10X25 Bolt M10×25	4	
10	51401100107	GB/T93	垫圈10 Elastic washer 10	4	
11	51421100115	GB/T97.1	垫圈10 Washer 10	4	
12	30003033905	LG0160DT.03.01.06	转向节焊合 Steering spindle	1	
13	51107262107	GB/T78	螺钉M20X45 Screw M20×45	2	
14	51421150115	GB/T97.1	垫圈20 Washer 20	2	
15	51311001225	GB/T6172.1	螺母M20 Nut M20	2	
16	30003106409	LG0160DT.03.01-016	垫圈 Washer	2	
17	30003118303	LG0160DT.03.01-017	调整垫片 Shim	4	
18	60980000363	LG0160DT.03.01-018	钢背轴套D10070B-1005B Bushing D10070B-10050	4	
19	30003133901	LG0160DT.03.01-020	支撑轴座 Bracket	2	
20	30003118506	LG0160DT.03.01-019	端盖 Hub cap	2	
21	51421110115	GB/T97.1	垫圈12 Washer 12	2	
22	51401110107	GB/T93	垫圈12 Elastic washer 12	2	
23	51207115114	GB/T5786	螺栓M12X1.25X25 Bolt M12×1.25×25	2	
24	56201000201	GB/T7940.1	油杯M8X1 Grease nipple	2	
25	51210172215	GB/T5785	螺栓M24X2X80 Bolt M24×2×80	4	
26	51401170107	GB/T93	垫圈24 Washer 24	24	
27	30003130903	LG0160DT.03.01-009	螺母 Nut	20	
28	30003129502	LG0160DT.03.01-010	轮毂螺栓 Hub bolt	20	
29	51309001220	GB/T6171	螺母M24X2 Nut M24×2	20	
30	56176010501	GB/T13871.1	密封圈160X190X15 Ring 160×190×15	2	
31	30003123304	LG0160DT.03.01-013	挡圈 Check ring	2	
32	52324001801	GB/T297	轴承32220 Bearing 32220	2	
33	30003129205	LG0160DT.03.01-022	轮毂 Hub	2	
34	52324001501	GB/T297	轴承32217 Bearing 32217	2	
35	51364003103	GB/T812	圆螺母M80X2 Nut M80×2	4	
36	51439410105	GB/T858	止动垫圈80 Locking washer 80	2	

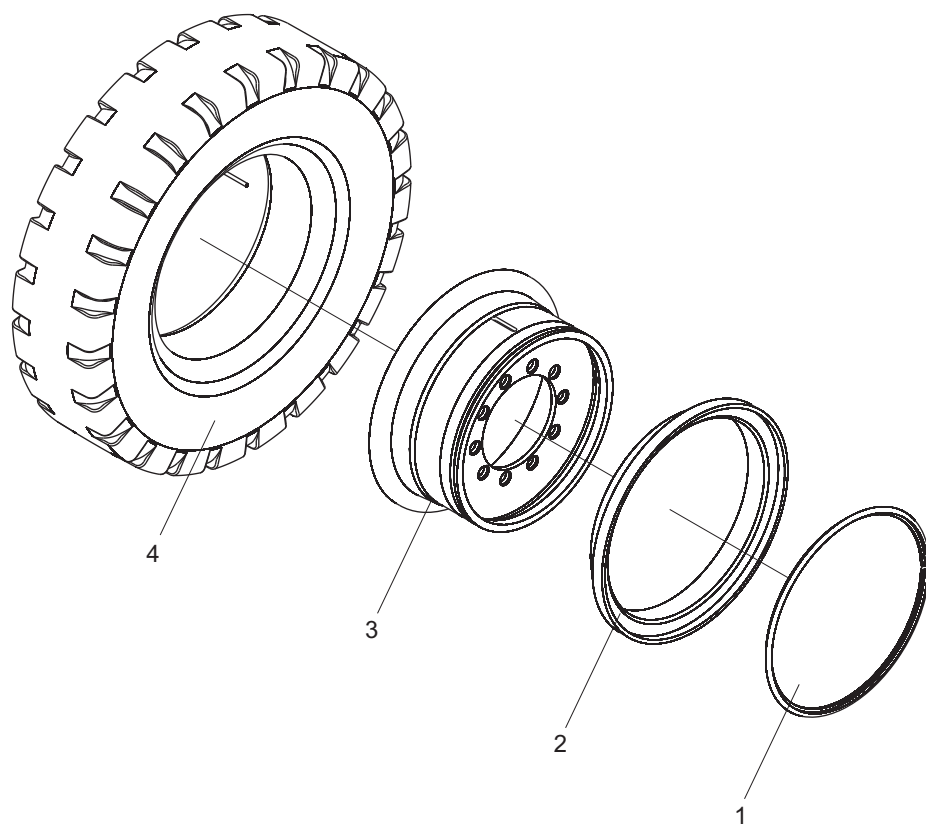
转向桥总成/Steering axle assembly

LG160DT



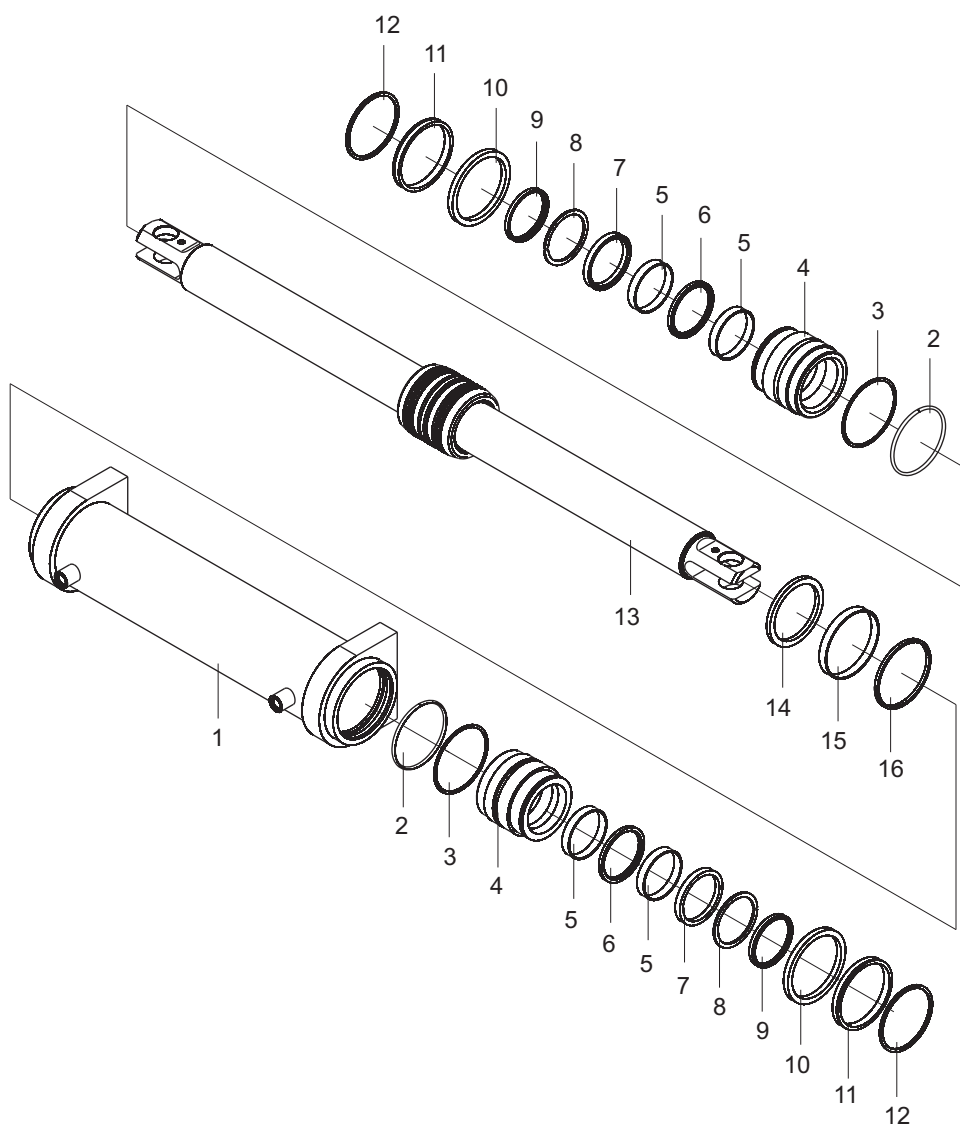
转向轮总成/Steering wheel assembly

LG160DT



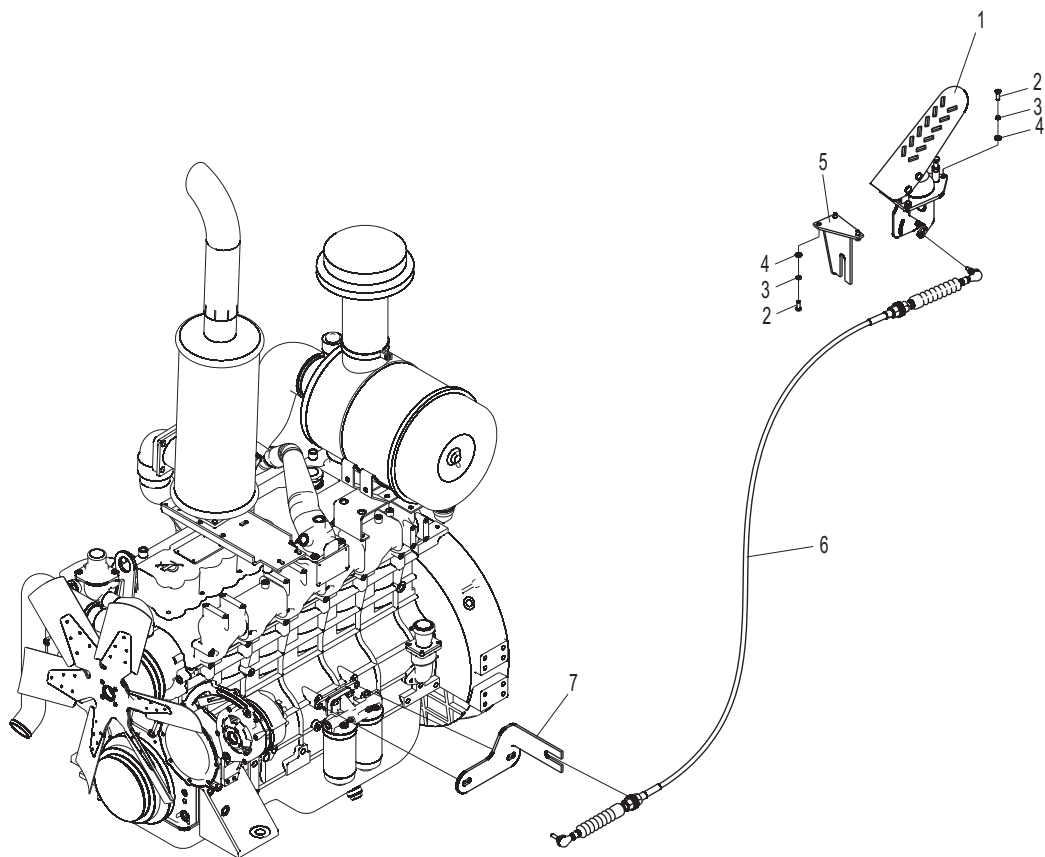
转向油缸 / Steering oil cylinder

LG160DT



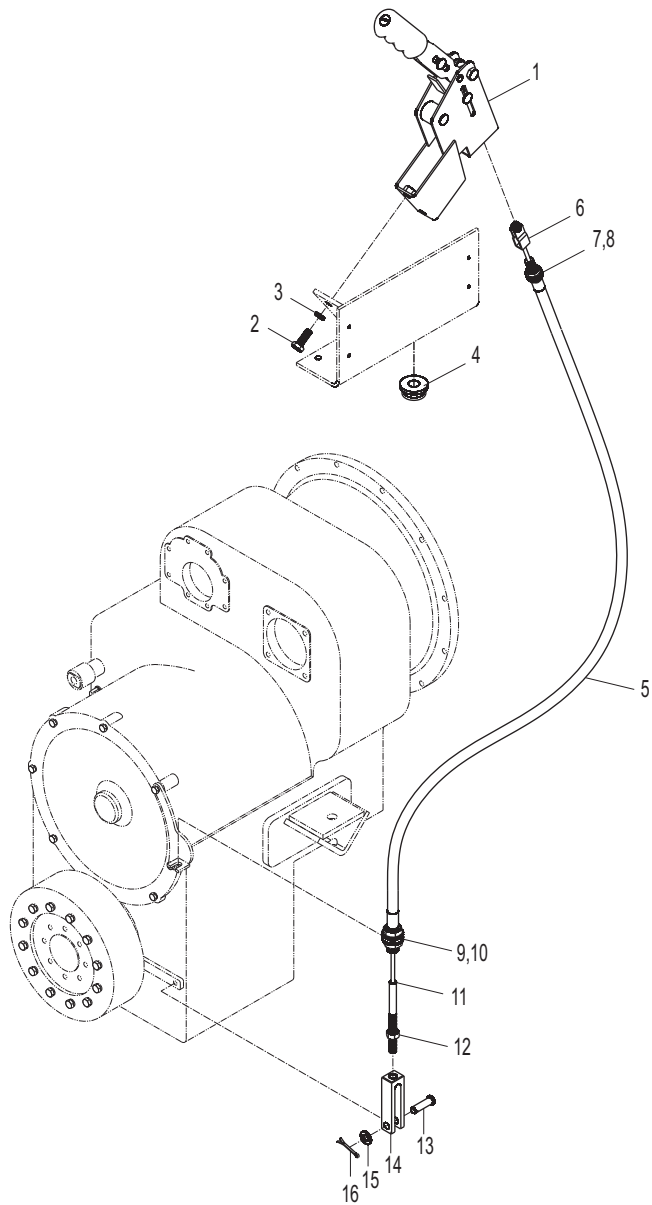
油门操纵/ Accelerator pedal

LG160DT



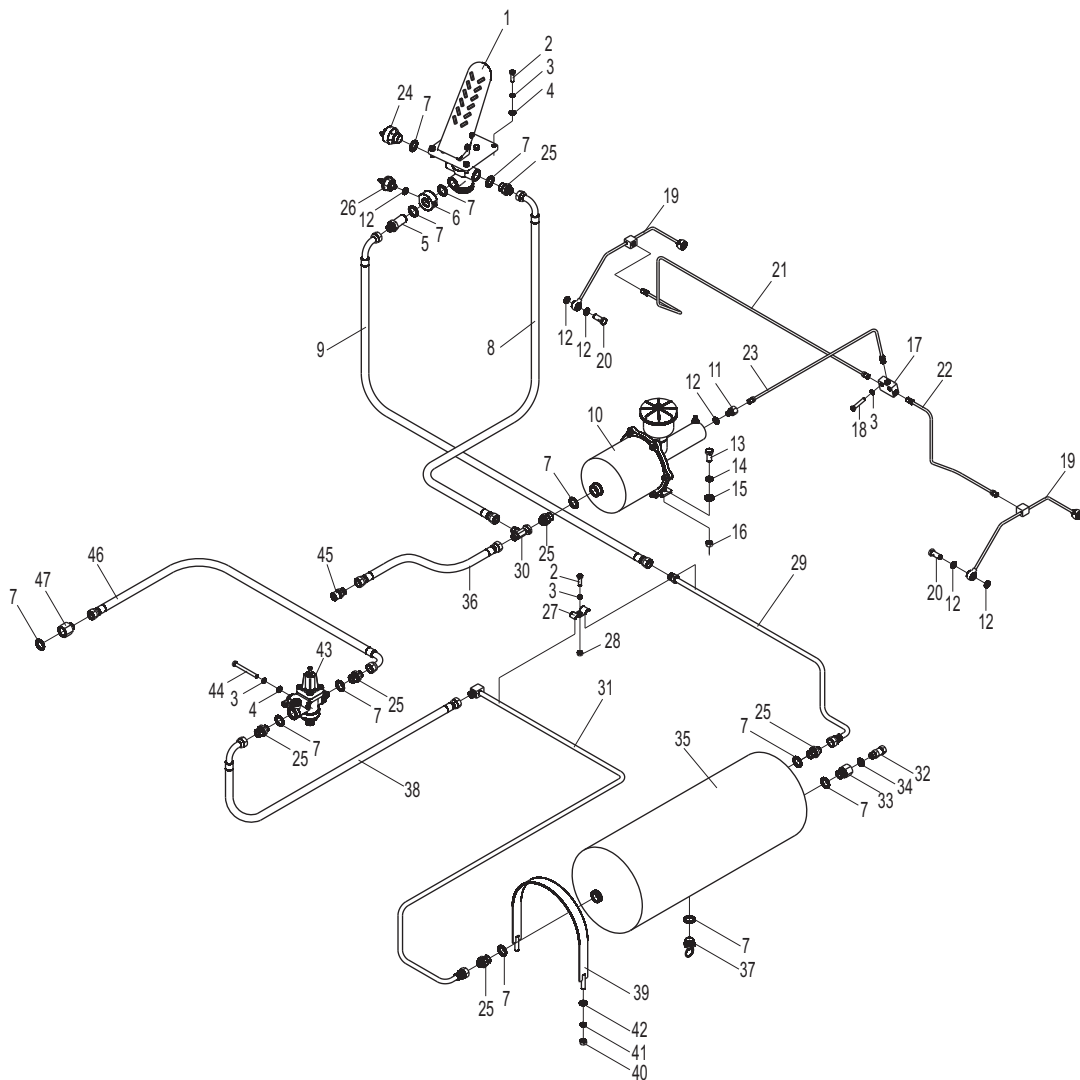
停车制动总成/Parking brake assembly

LG160DT



制动管路系统/Brake pipe system

LG160DT

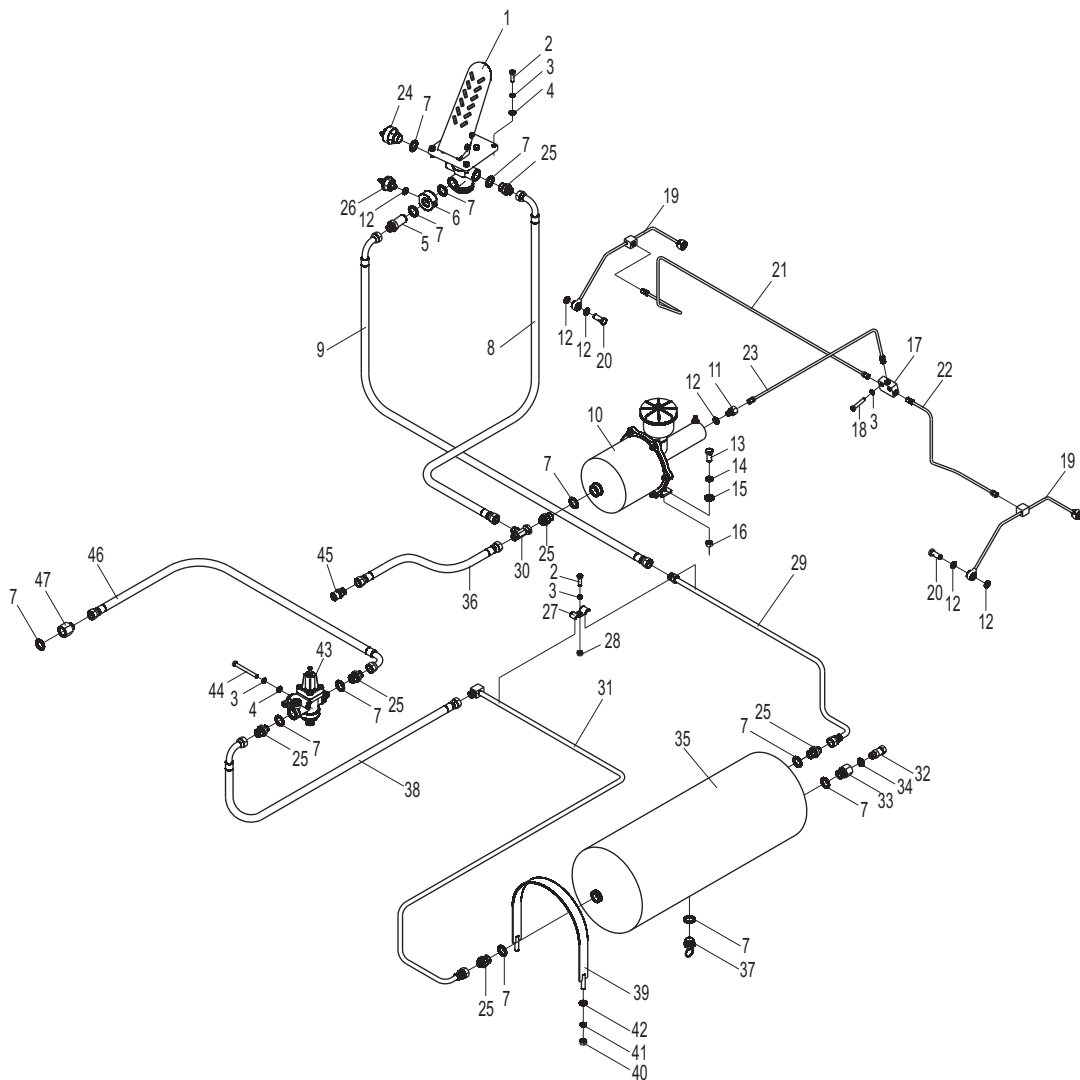


制动管路系统/Brake pipe system

序号 Item No	编 码 Code	图 号 Part No	零部件名称 Description	数量 Q'ty	备 注 Remark
1	60505010039	LG0160DT.13.01	行车制动阀总成 Brake valve assembly	1	
2	51204091214	GB/T5783	螺栓M8X30 Bolt M8×30	5	
3	51401090107	GB/T93	垫圈8 Spring lock washer 8	9	
4	51421090115	GB/T97.1	垫圈8 Plain washer 8	6	
5	17601001073	LG0160DT.13-001	过渡接头 Adapter	1	
6	60980000851	LG0160DT.13-002	固定块 Support	1	
7	56147011301	JB/T982	组合垫圈22 Washer 22	12	
8	17272002736	20411-18T/20491-18T*1T06*1250	胶管总成 Hose assembly	1	
9	17272002737	20411-18T/20491-18T*1T06*1550	胶管总成 Hose assembly	1	
10	60301000212	LG0160DT.13.04	空气加力泵总成 Pump	1	
11	17601001074	LG0160DT.13-003	过渡接头 Adapter	1	
12	56147010201	JB/T982	组合垫圈12 Washer 12	10	
13	51204111114	GB/T5783	螺栓M12X25 Bolt M12×25	2	
14	51401110107	GB/T93	垫圈12 Spring lock washer 12	2	
15	51421110115	GB/T97.1	垫圈12 Plain washer 12	2	
16	51307001119	GB/T6170	螺母M12 Nut M12	2	
17	60911010533	LG0100DT.13-007	过渡接头 Adapter	1	
18	51203091414	GB/T5782	螺栓M8X40 Bolt M8×40	2	
19	60911010859	LG0160DT.13.05	钢管焊合 Tube weldment	2	
20	37201000584	700M-12CL35	螺栓 Bolt	4	
21	60911010860	LG0160DT.13.06	钢管总成 Tube weldment	1	
22	60911010861	LG0160DT.13.07	钢管总成 Tube weldment	1	
23	60911010862	LG0160DT.13.08	钢管总成 Tube weldment	1	
24	60208000114	LG0160DT.13.09	制动灯开关总成 Brake lamp switch	1	
25	17601000322	L1CL-18-22	过渡接头 Adapter	6	
26	60402020059	LG0160DT.13.10	警报灯开关总成 warning lamp switch	1	
27	30012107818	LG0060DT.12-008	管夹 Clip	1	
28	51307000919	GB/T6170	螺母M8 Nut M8	1	
29	60911010863	LG0160DT.13.11	钢管焊合 Tube weldment	1	
30	17601000900	LCC-18W	过渡接头 Adapter	1	
31	60911010865	LG0160DT.13.12	钢管焊合 Tube weldment	1	
32	60304000093	LG0160DT.13.13	安全阀总成 Safety valve assembly	1	
33	17601000771	L5LM-22-16	过渡接头 Adapter	1	
34	56147010401	JB/T982	组合垫圈16 Washer 16	1	
35	60502010001	LG0160DT.13.14	储气筒焊合 Air-reserve tank weldment	1	
36	17272001852	20411-18T*1W06*450	胶管总成 Hose assembly	1	

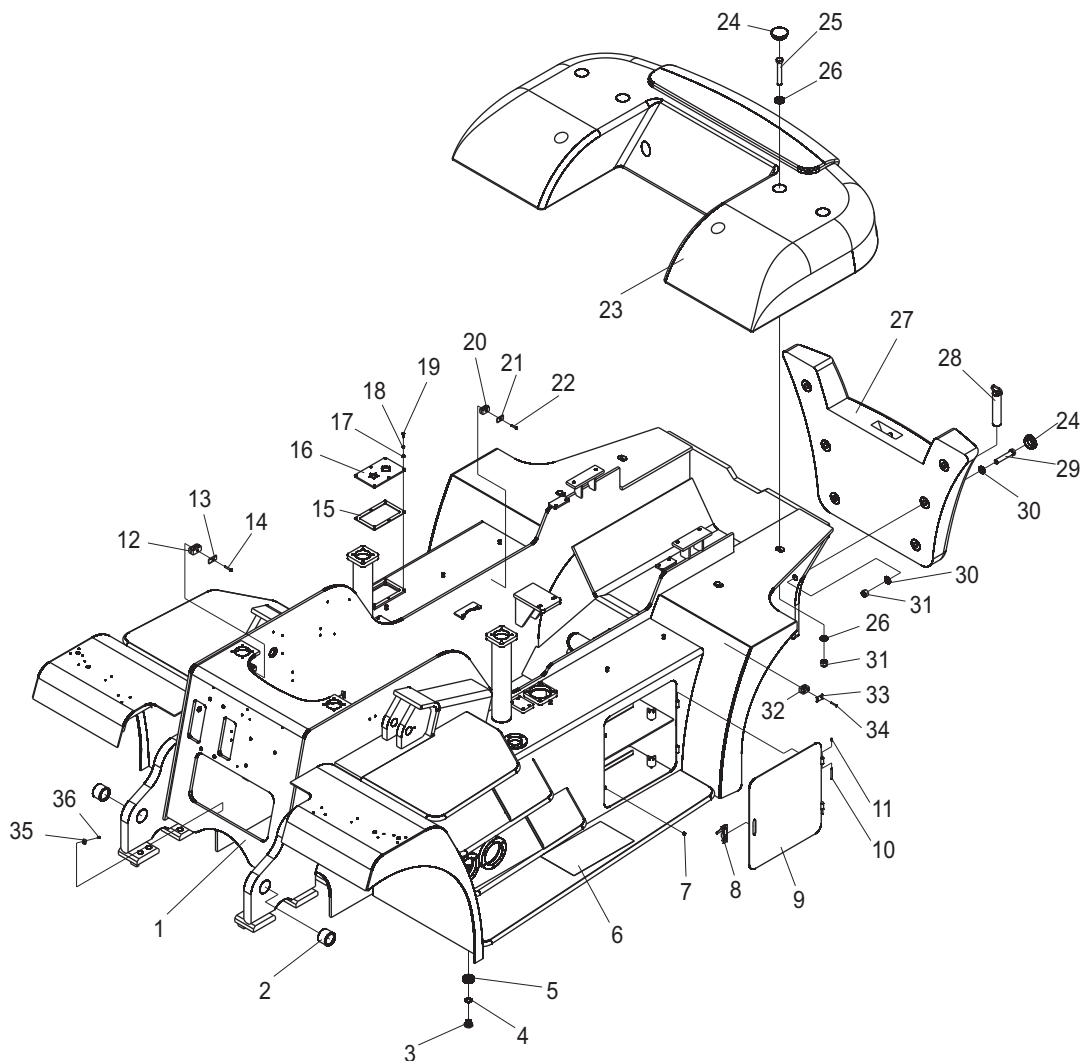
制动管路系统/Brake pipe system

LG160DT



车架/Frame

LG160DT

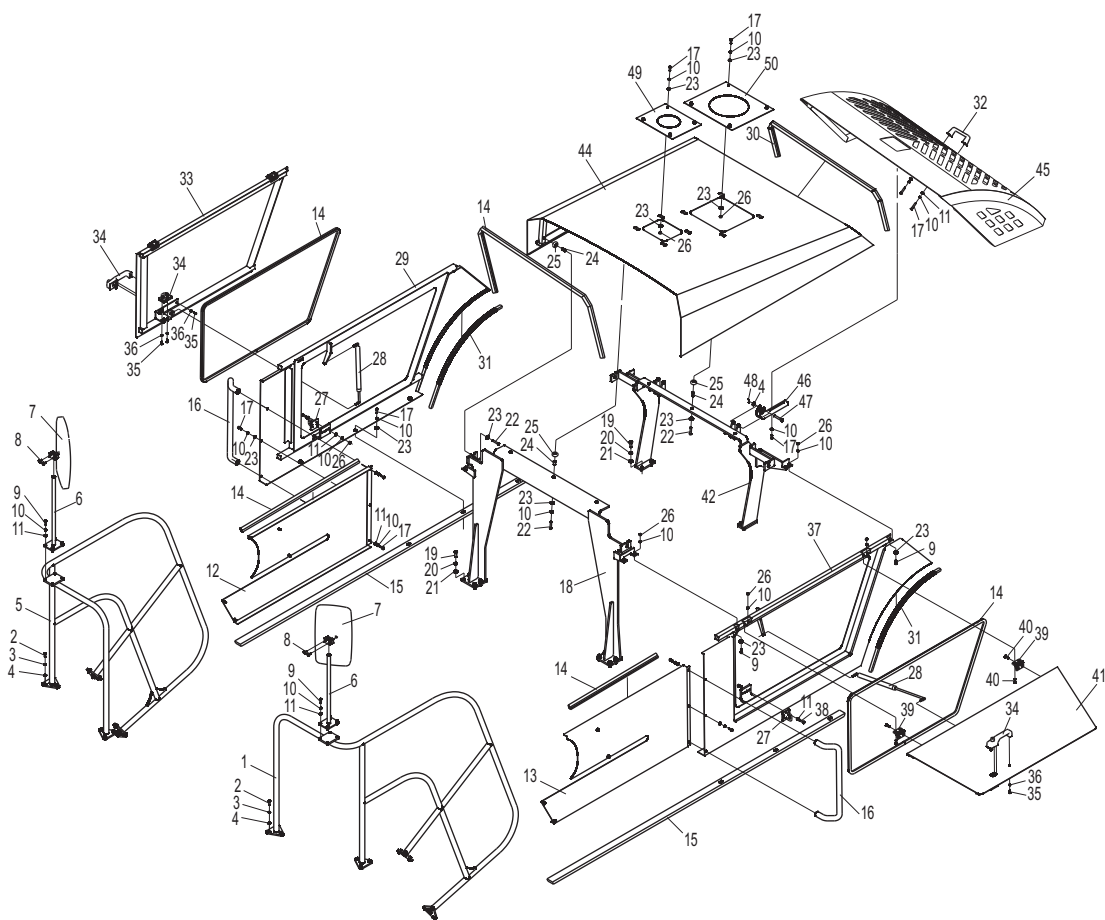


车架/Frame

序号 Item No	编 码 Code	图 号 Part No	零部件名称 Description	数量 Q'ty	备 注 Remark
1	30008050013	LG0160DT.08.01	车架焊合 Frame body	1	
2	60980000850	LG0260DT.08-001	自润轴承 Bushing	2	
3	30008153302	LG0100DT.08-003	油堵 Drain plug	2	
4	56147012001	JB/T982	组合垫圈33 Washer 33	2	
5	30008154200	LG0060DT.08-003	磁铁70X32X15 Magnet 70×32×15	2	
6	30008155201	LG0160DT.08-002	防滑垫 Non-slipping shim	2	
7	33008113902	LG0260DT.08.05-002	橡胶垫 Rubber washer	2	
8	60701010034	LG0260DT.08.05.03-002	门锁 Lock	1	
9	30008046505	LG0160DT.08.02	盖板焊合 Cover weldment	1	
10	33008119509	LG0260DT.08.05.03-003	销轴 Pin	2	
11	56201000101	JB/T7940.1	油杯M6 Grease nipple	2	
12	60911013460	LG0160DT.08.04	管夹(双联) Hose clamp	6	
13	33001107900	LG0260DT.01.05-006	管夹盖板 Cover plate	6	
14	51204091514	GB/T5783	螺栓M8X45 Bolt M8×45	6	
15	30008111501	LG0160DT.08-004	密封垫 Rubber washer	1	
16	30008107312	LG0160DT.08-003	盖板 Cover plate	1	
17	51421090115	GB/T97.1	垫圈8 Plain washer 8	6	
18	51401090107	GB/T93	垫圈8 Spring lock washer 8	6	
19	51204091014	GB/T5783	螺栓M8X20 Bolt M8×20	6	
20	60911010483	LG0260DT.12.89	管夹 Hose clamp	2	
21	33012107901	LG0260DT.12-008	管夹盖板 Cover plate	2	
22	51204091314	GB/T5783	螺栓M8X35 Bolt M8×35	2	
23	30017151527	LG0160DT.08-005	平衡重 Counterweight	1	
24	33017159100	LG0260DT.08-014	孔塞 Plug	12	
25	51203173414	GB/T5782	螺栓M24X170 Bolt M24×170	4	
26	33017106400	LG0260DT.08-012	垫圈 Washer	8	
27	30017151528	LG0160DT.08-006	平衡重 Counterweight	1	
28	30017038507	LG0160DT.08.03	牵引销焊合 Pin weldment	1	
29	51203172914	GB/T5782	螺栓M24X130 Bolt M24×130	6	
30	51421170115	GB/T97.1	垫圈24 Plain washer 24	12	
31	51347000919	GB/T6184	螺母M24 Nut M24	10	
32	60911013461	LG0160DT.08.05	管夹 Hose clamp	2	
33	60911013462	LG0160DT.08-007	盖板 Cover plate	2	
34	51203081414	GB/T5782	螺栓M6X40 Bolt M6×40	4	
35	30008153102	LG0060DT.08.01.06-001	压板 Plate	4	
36	51158170404	GB/T818	螺钉M5X12 Screw M5×12	4	

覆盖件系统/Mantle system

LG160DT

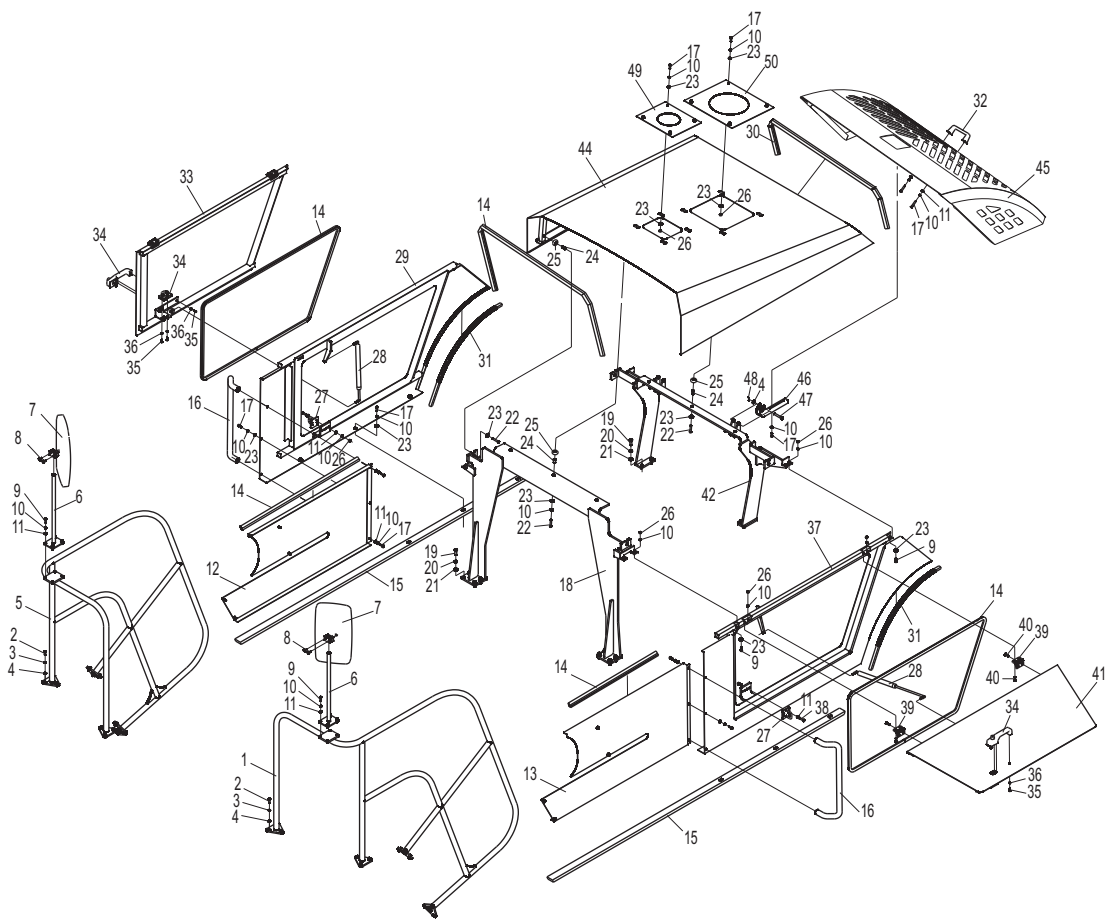


覆盖件系统/Mantle system

序号 Item No	编 码 Code	图 号 Part No	零部件名称 Description	数量 Q'ty	备 注 Remark
1	30009046200	LG0160DT.09.01	扶手焊接 Handrail weldment	1	
2	51204101114	GB/T5783	螺栓M10X25 Bolt M10×25	24	
3	51401100107	GB/T93	垫圈10 Spring lock washer 10	24	
4	51421100115	GB/T97.1	垫圈10 Plain washer 10	26	
5	30009046201	LG0160DT.09.03	扶手焊接 Handrail weldment	1	
6	30009018101	LG0160DT.09.16.01	支架焊接 Bracket	2	
7	60917010020	LG0260DT.08.09	后视镜 Rearview mirror	2	
8	51158210404	GB/T818	螺钉M8X16 Bolt M8×16	4	
9	51204091014	GB/T5783	螺栓M8X20 Bolt M8×20	12	
10	51421100115	GB/T93	垫圈8 Spring lock washer 8	64	
11	51401100107	GB/T97.1	垫圈8 Plain washer 8	20	
12	30009046502	LG0160DT.09.24	盖板焊接 Panel weldment	1	
13	30009046501	LG0160DT.09.23	盖板焊接 Panel weldment	1	
14	60919011489	LG0160DT.09-017	九字密封条 Rubber strip	2	
15	60919011490	LG0160DT.09-001	底部胶条 Rubber strip	2	
16	30009156201	LG0160DT.09-011	把手 Handle	2	
17	51204090914	GB/T5783	螺栓M8X16 Bolt M8×16	30	
18	30009018100	LG0160DT.09.12	支架焊接 Bracket,weldment	1	
19	51204111214	GB/T5783	螺栓M12X30 Bolt	12	
20	51401110107	GB/T93	垫圈12 Washer 12	12	
21	51401110107	GB/T93	垫圈12 Washer 12	12	
22	51204091414	GB/T5783	螺栓M8X40 Bolt M8×40	10	
23	51420090121	GB/T96.1	垫圈8 Washer 8	50	
24	30009107402	LG0160DT.09-009	钢管 steel Pipe	10	
25	60919011491	LG0160DT.09-006	缓冲胶垫 Rubber strip	10	
26	51307000919	GB/T6170	螺母M8 Nut M8	24	
27	30009047302	LG0160DT.09.19	锁扣焊接 Lock clamp,weldment	2	
28	60920011460	LG0160DT.09.20	气弹簧总成 Spring	2	
29	30009059900	LG0160DT.09.05	门体焊接 Doorframe,weldment	1	
30	60919010165	LG0160DT.09-018	九字密封条 Rubber strip	1	
31	60919011488	LG0160DT.09-016	门框配重胶条 Rubber	2	
32	60701011519	LG0160DT.09.18	把手 Handle	1	
33	30009059902	LG0160DT.09.08	门体焊接 Door,weldment	1	
34	60701010163	LG0260DT.09.05.04	锁 Lock	2	
35	51158190504	GB/T818	螺钉M6X16 Screw M6×16	10	
36	51401080107	GB/T93	垫圈6 Washer 6	10	

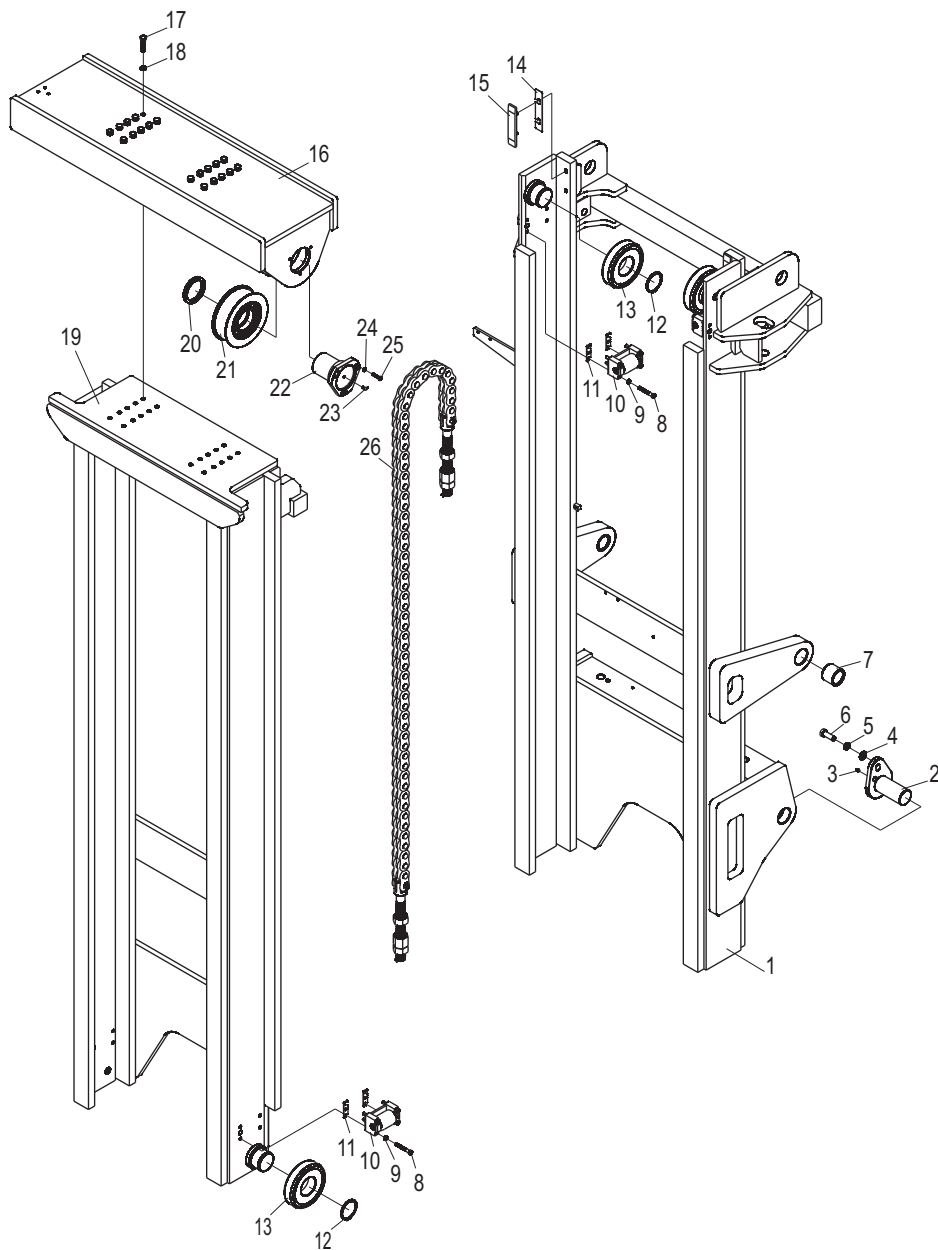
覆盖件系统/Mantle system

LG160DT



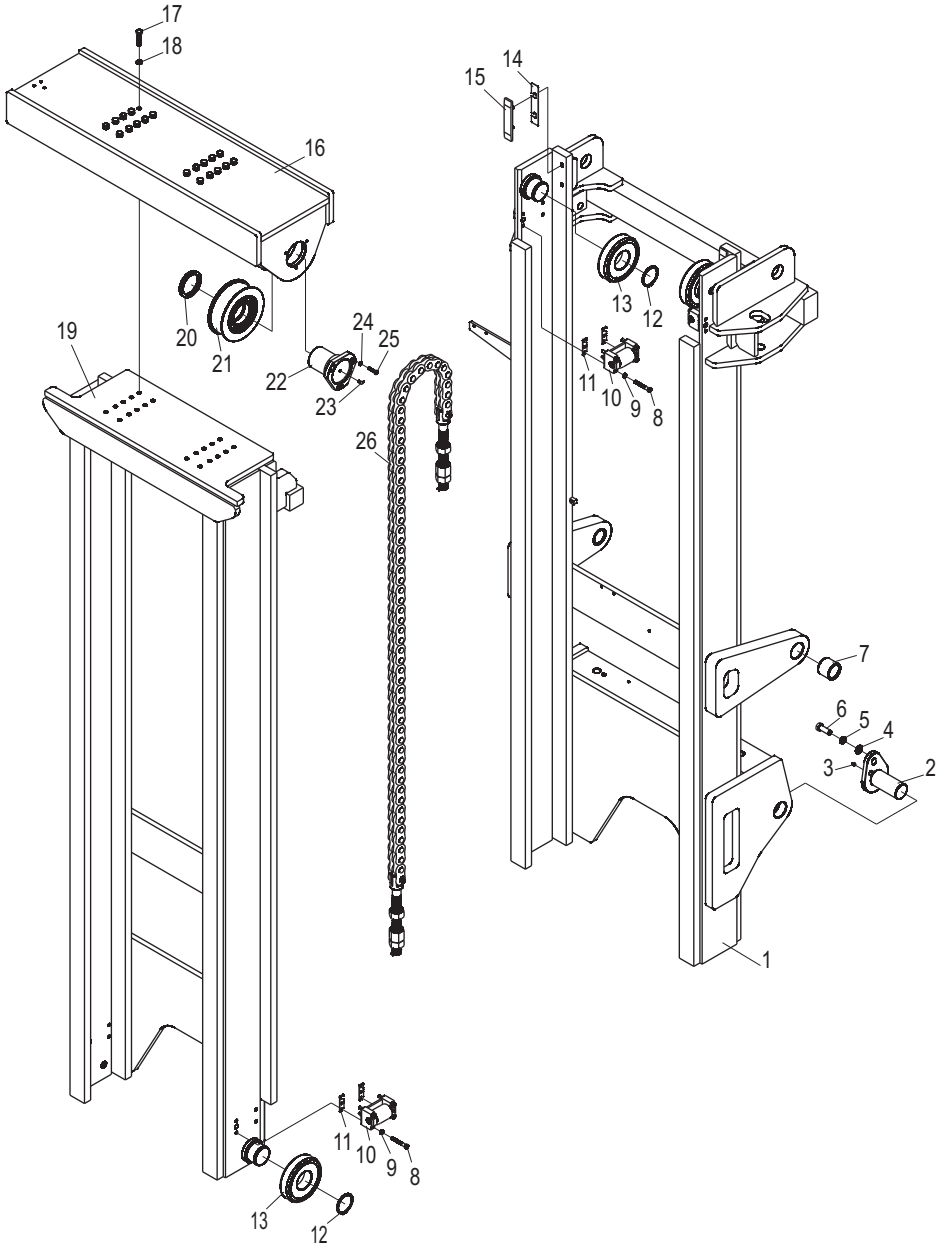
门架(基本型) / Mast (normal mast)

LG160DT



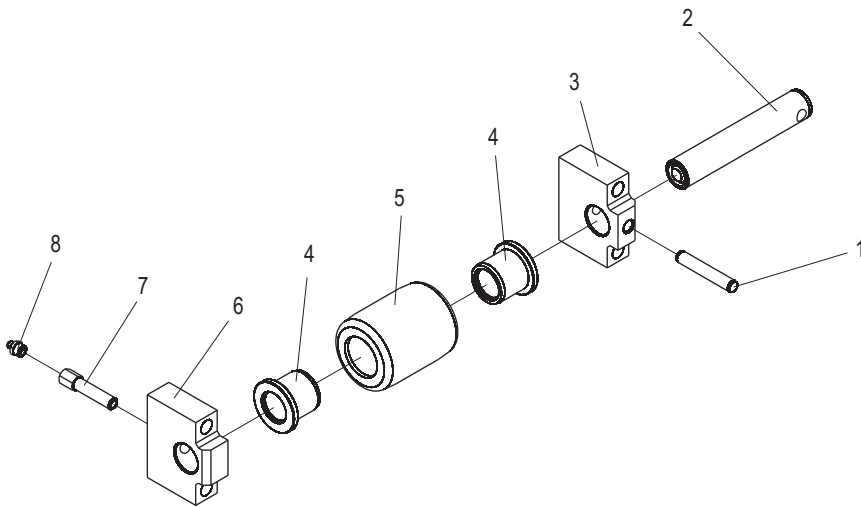
门架参数表(基本型) / Mast type (normal mast)

LG160DT



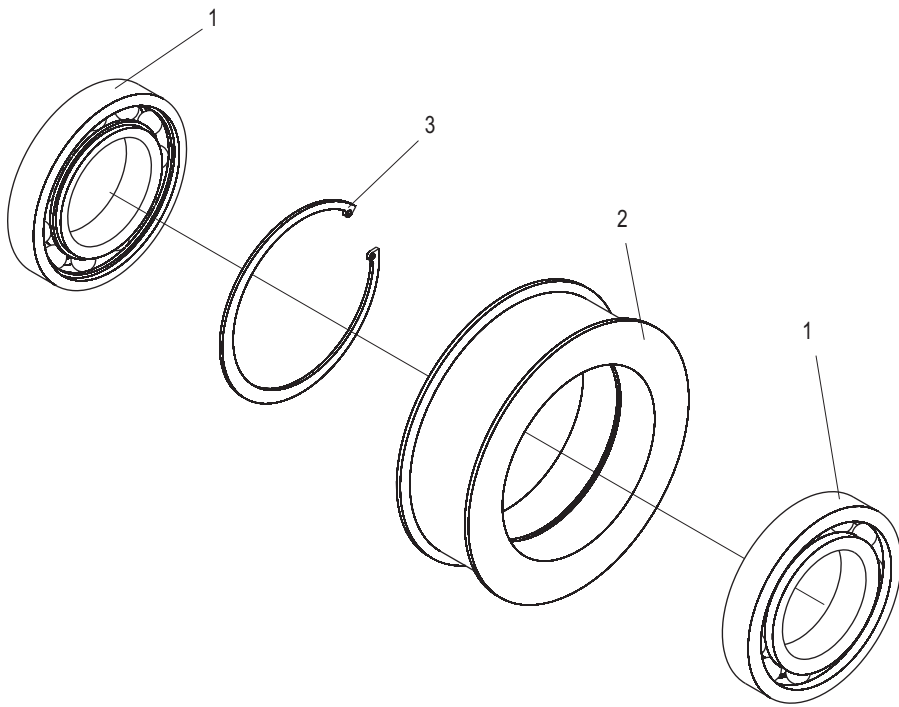
滚轮总成/Roller assembly

LG160DT



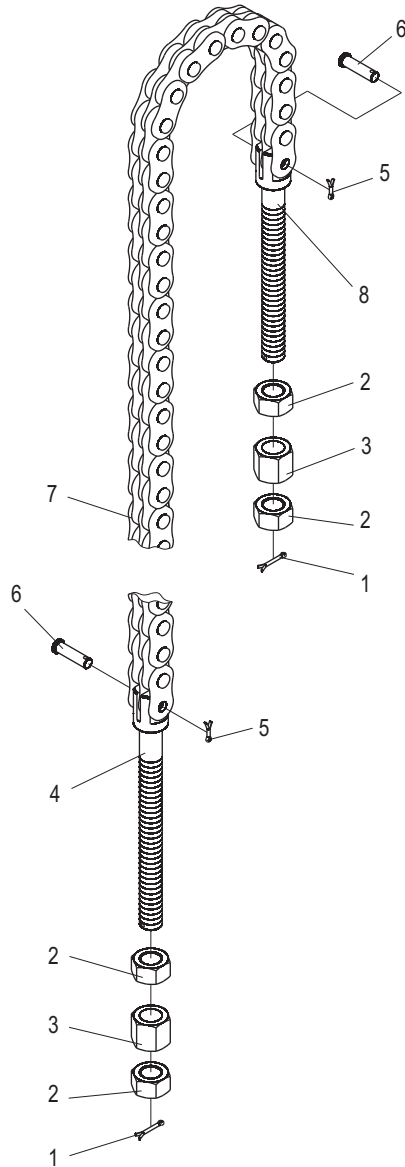
链轮总成/Sheave assembly

LG160DT



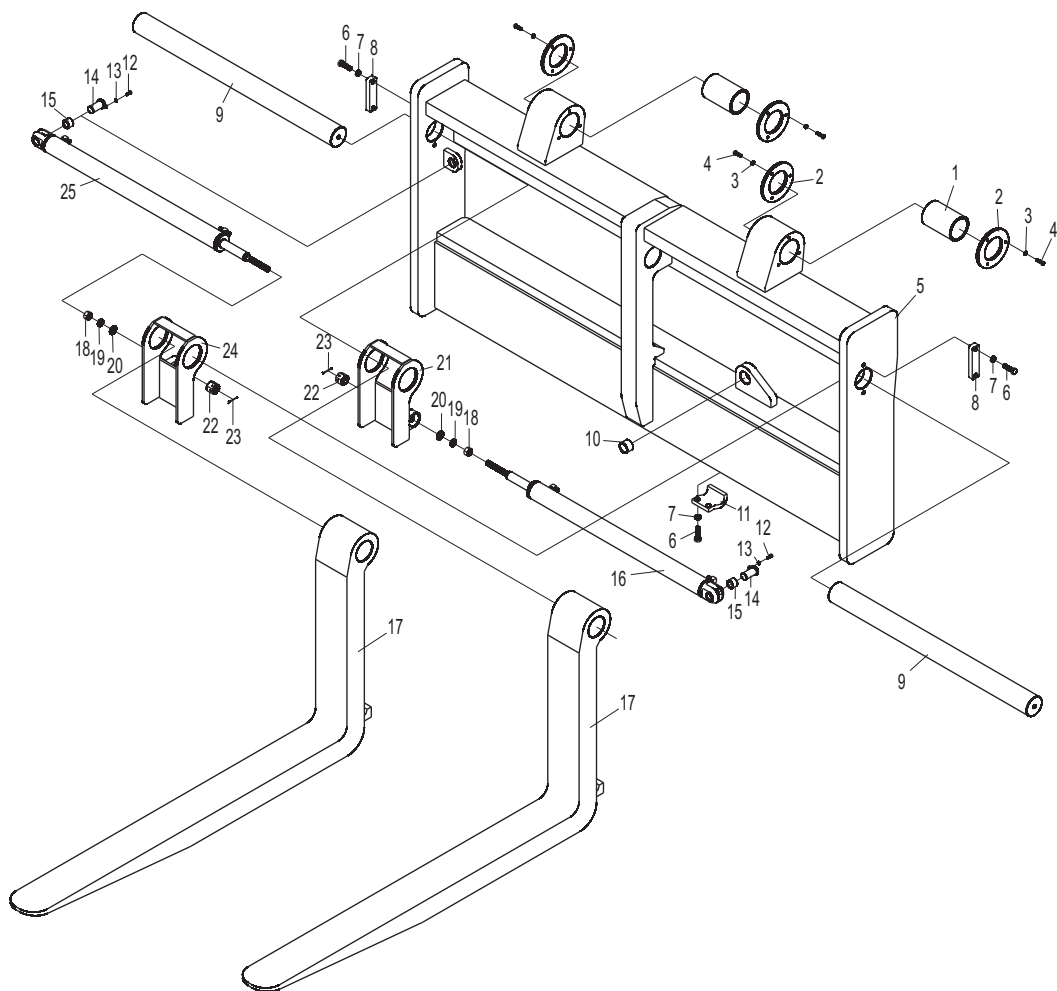
链条总成/Chain assembly

LG160DT



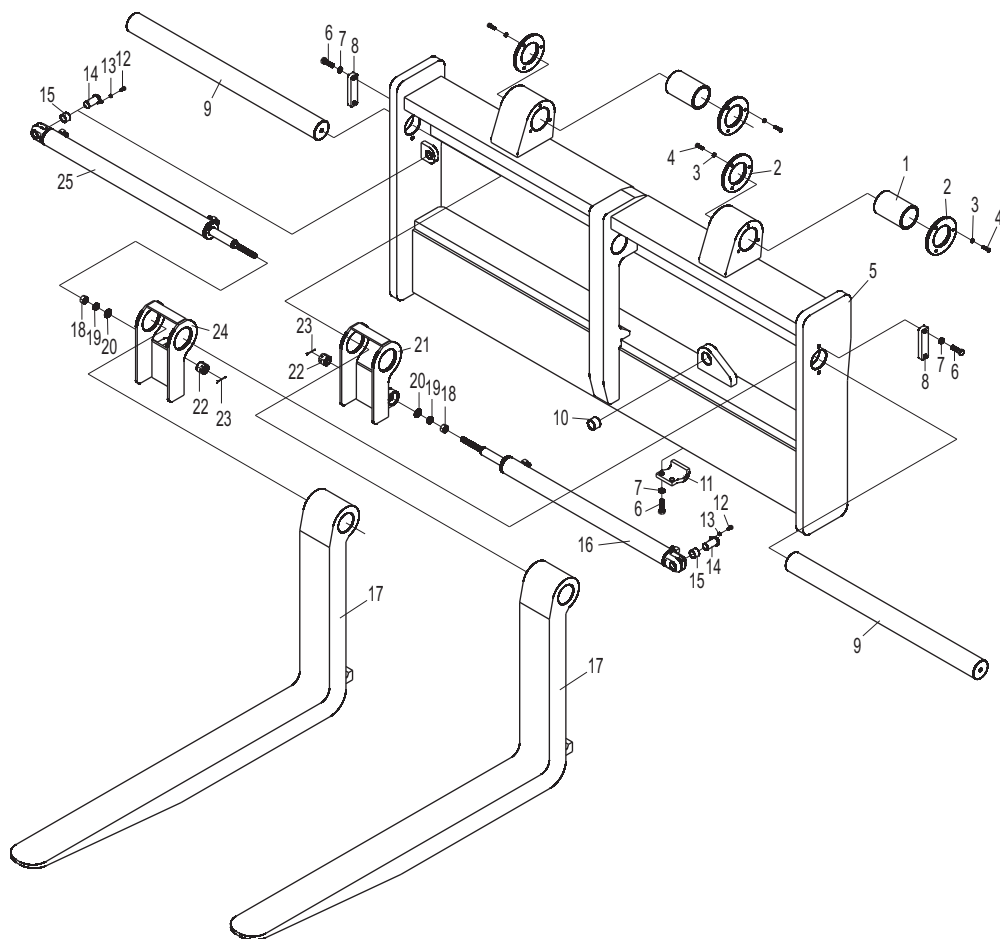
货叉及货叉架(基本型) / Fork & Lift bracket(normal mast)

LG160DT



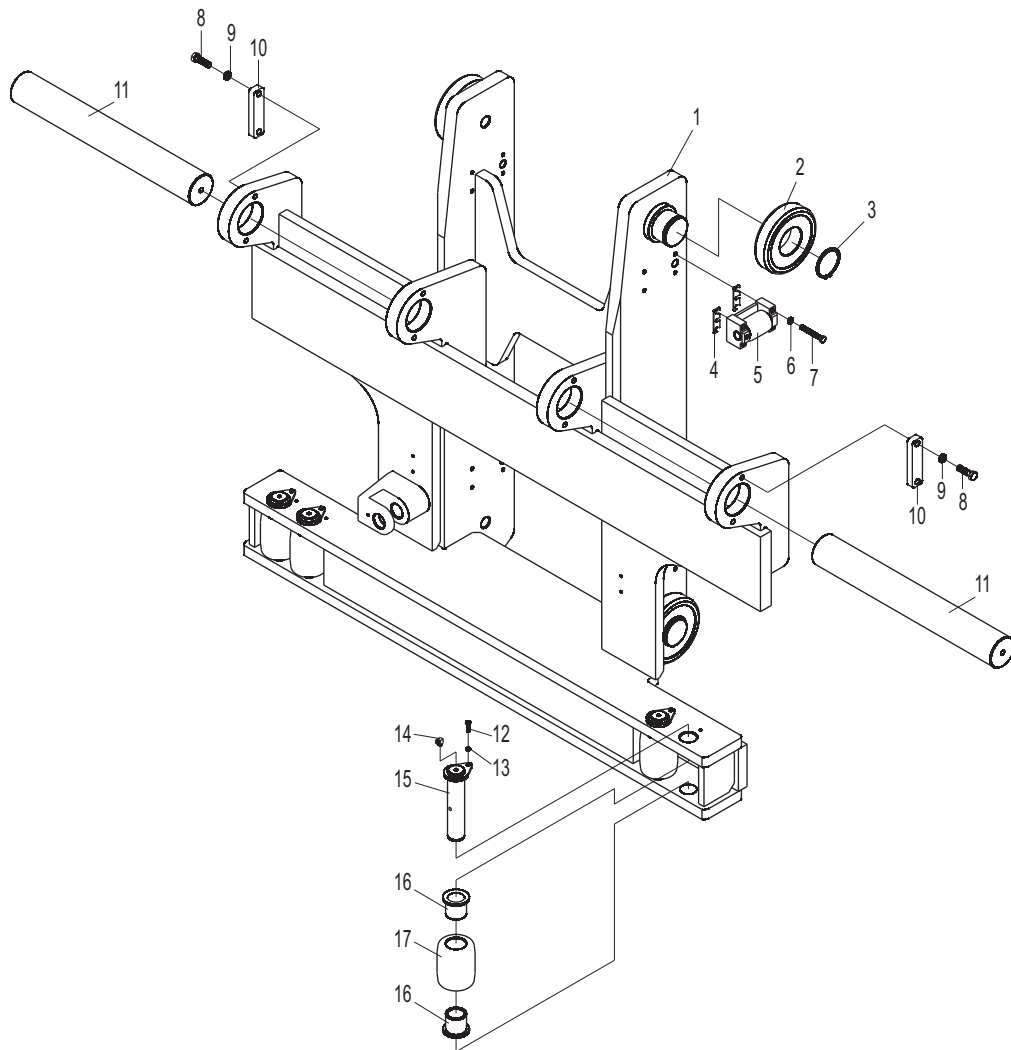
货叉及货叉架(叉移) / Fork & Lift bracket(Side Shift)

LG160DT



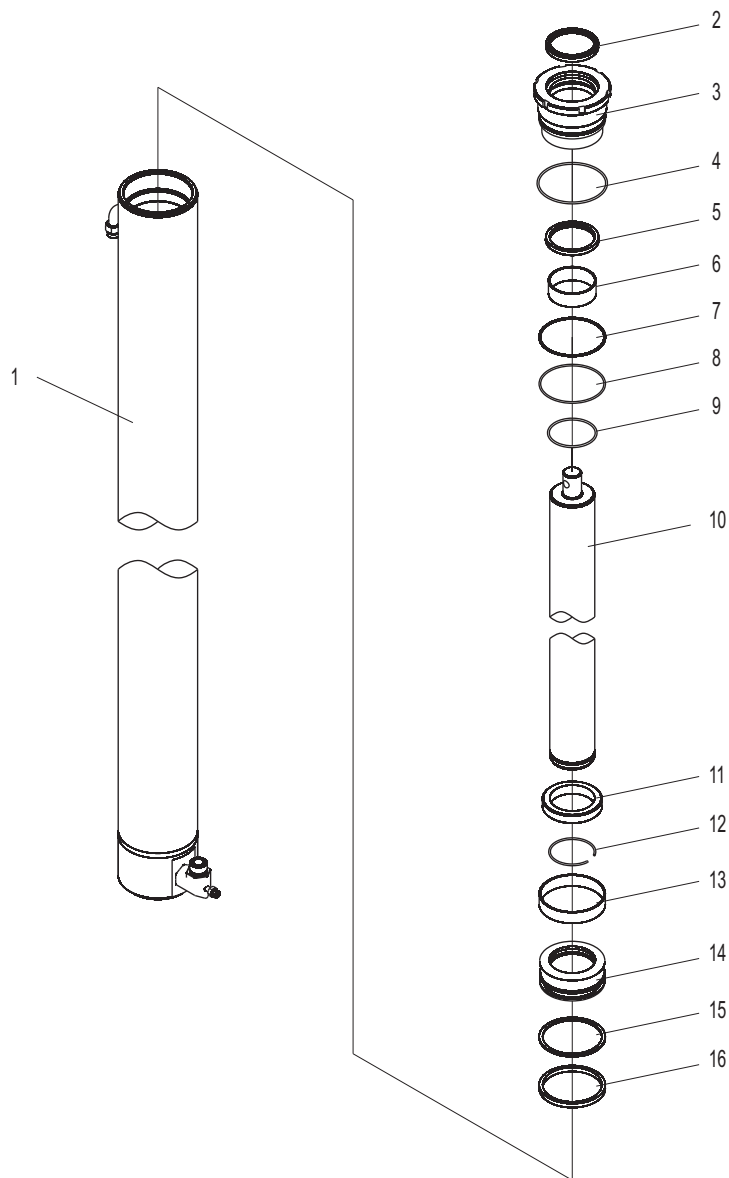
起升架总成(叉移) / Lift bracket assembly(Side Shift)

LG160DT



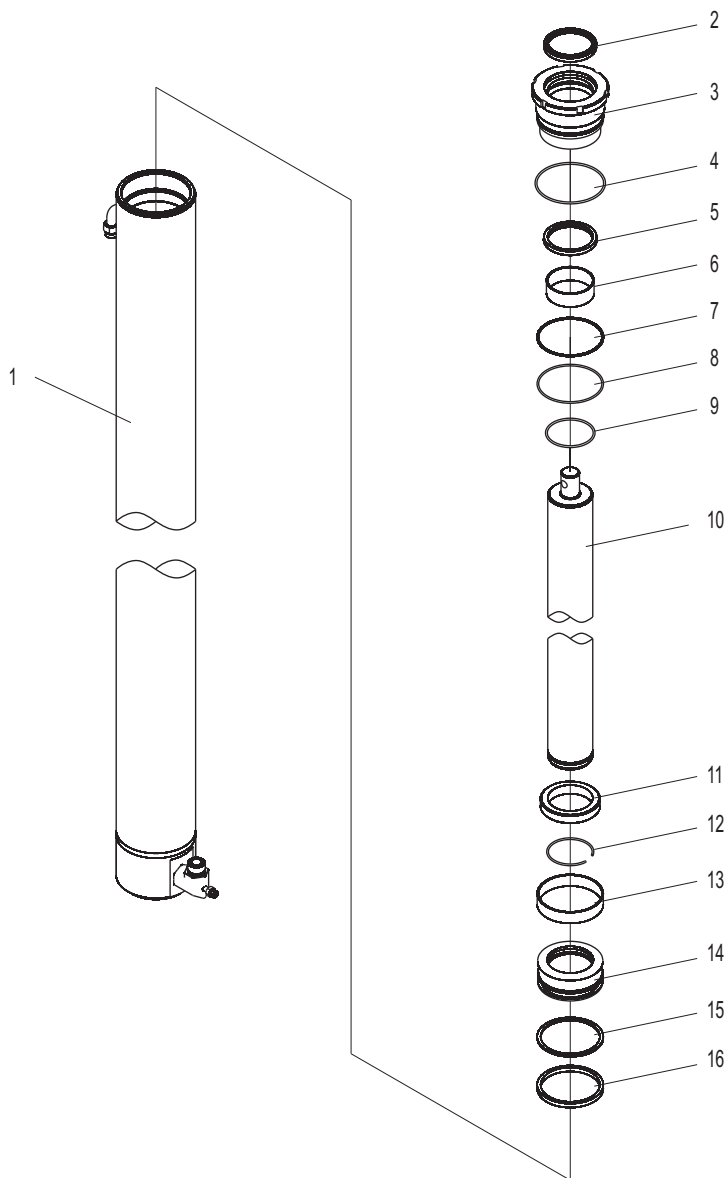
起升油缸(基本型) / Lift cylinder (normal mast)

LG160DT



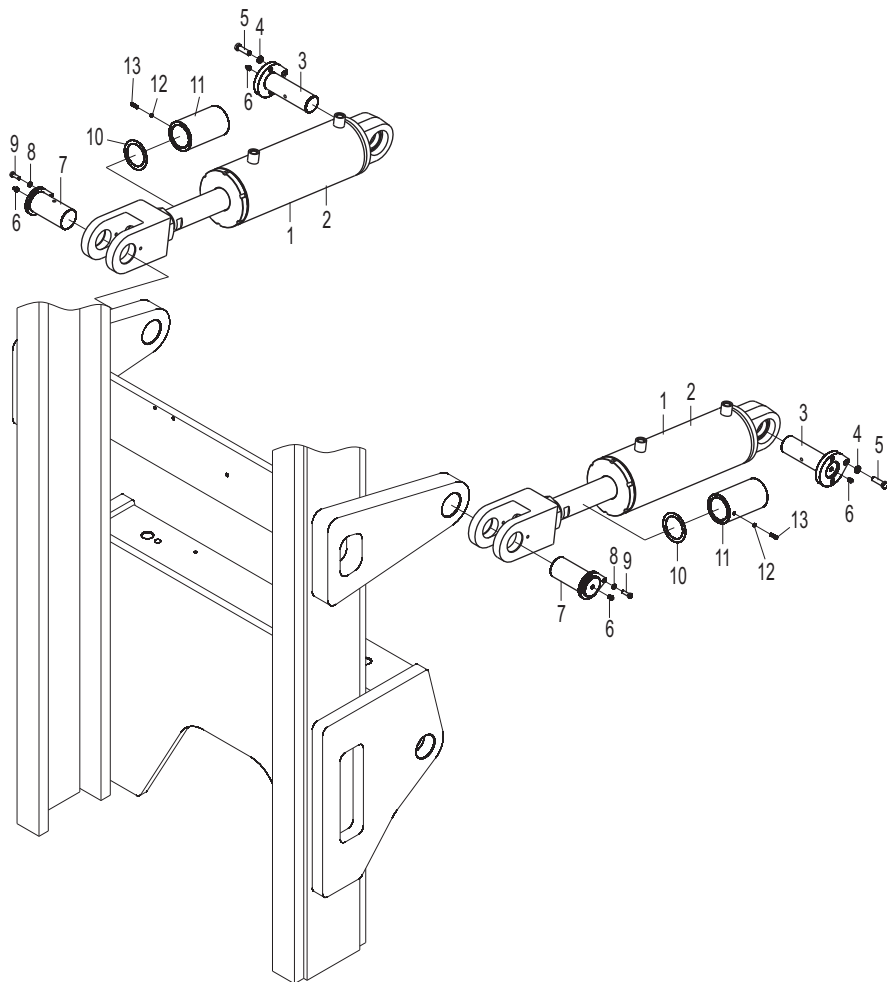
起升油缸(基本型) / Lift cylinder (normal mast)

LG160DT



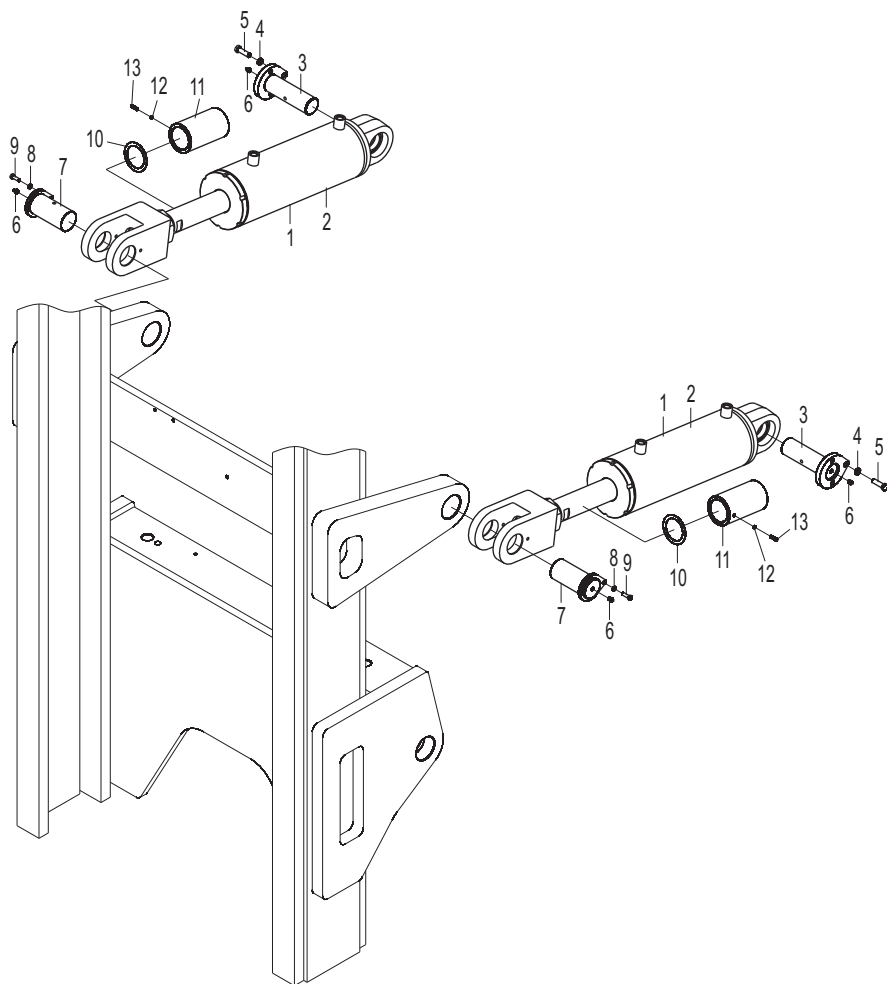
倾斜油缸总成 / Tilt cylinder assembly

LG160DT



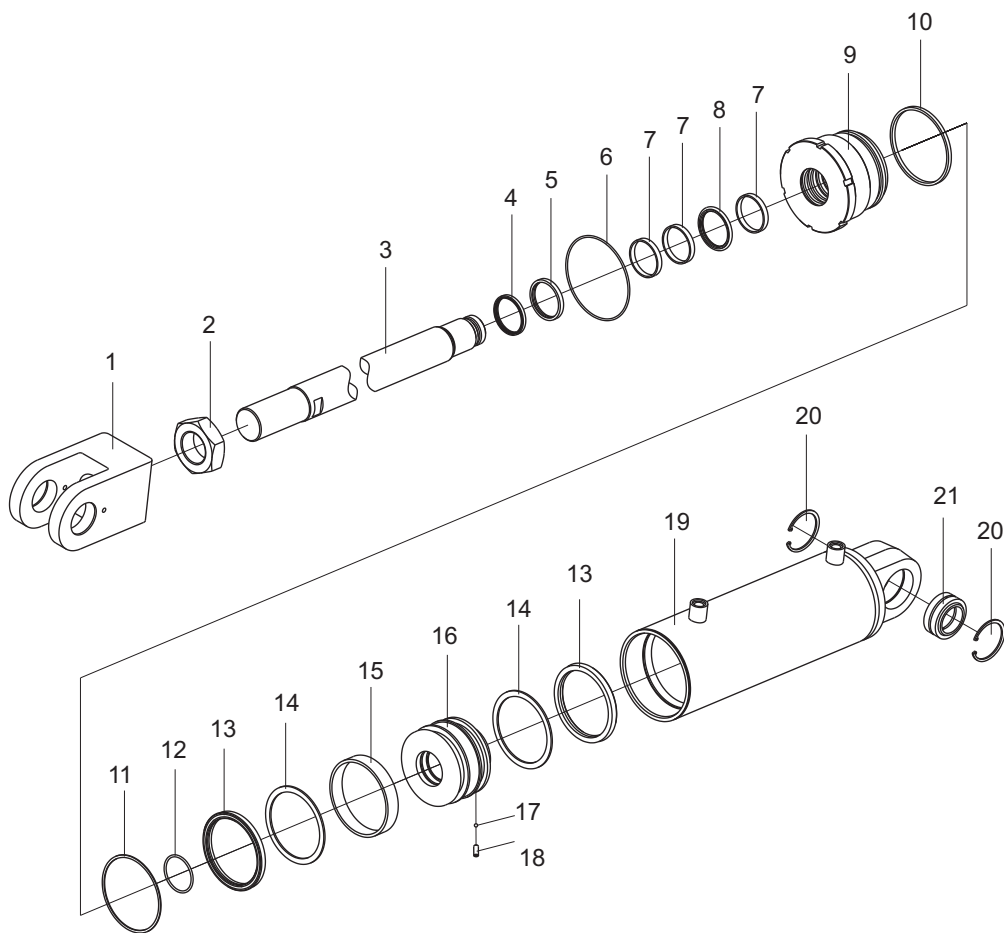
倾斜油缸总成参数/Tilt cylinder assembly type

LG160DT



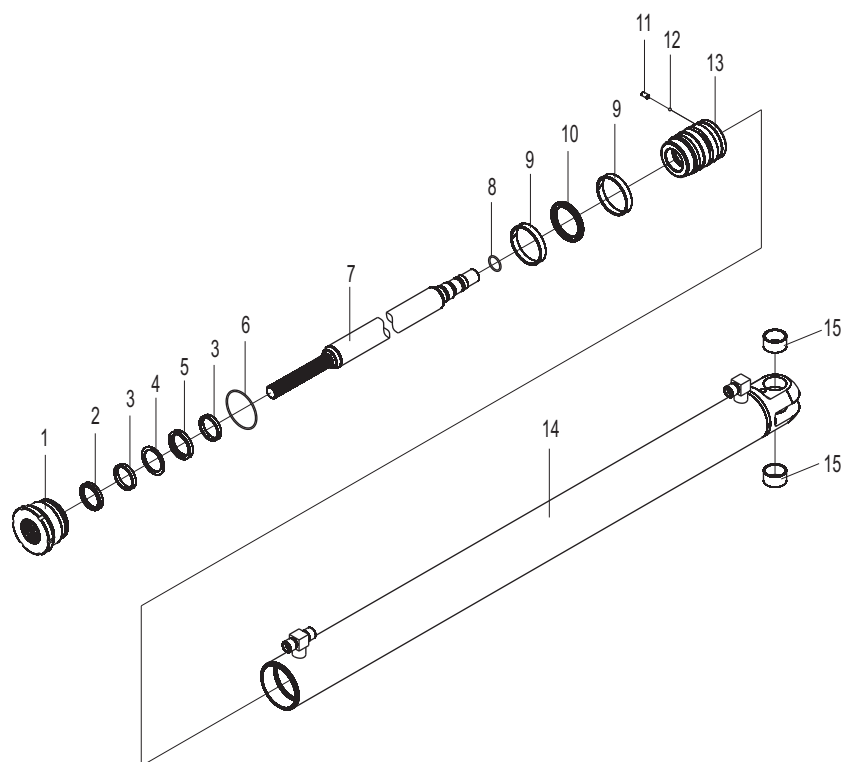
倾斜油缸/Tilt cylinder

LG160DT



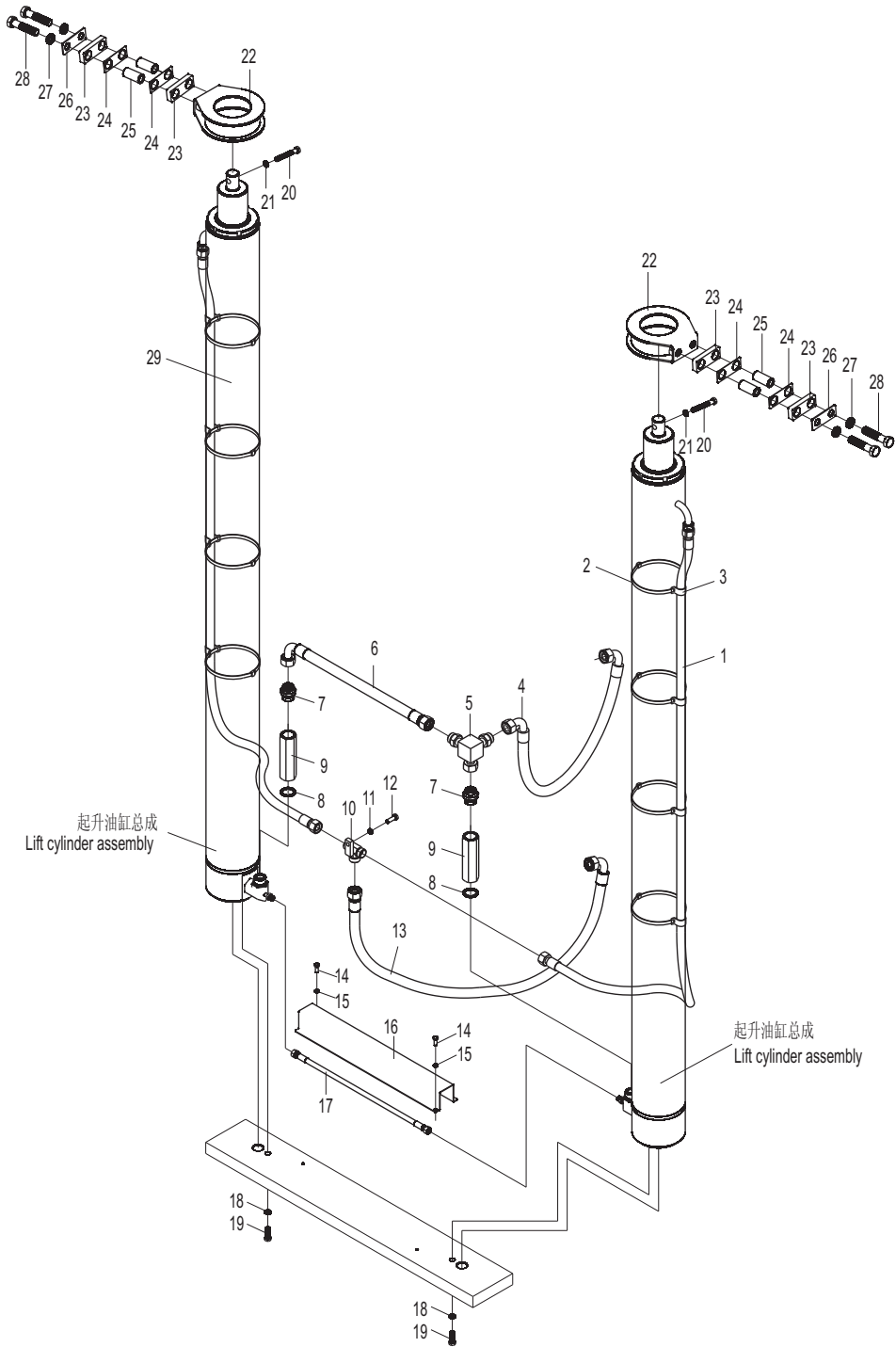
叉移油缸/Side shift cylinder

LG160DT



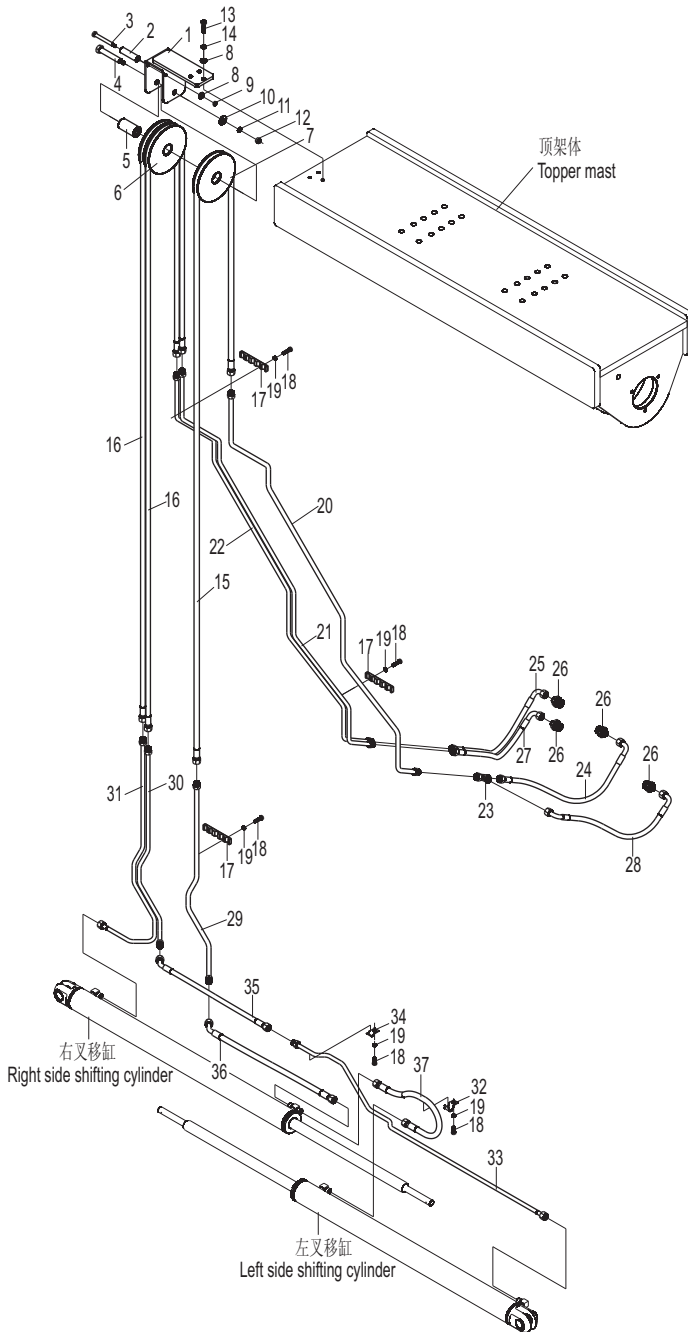
门架起升管路系统 (基本型) / Lifting pipe system (normal mast)

LG160DT



门架侧移管路系统 (基本型) / Side shift pipe system (normal mast)

LG160DT



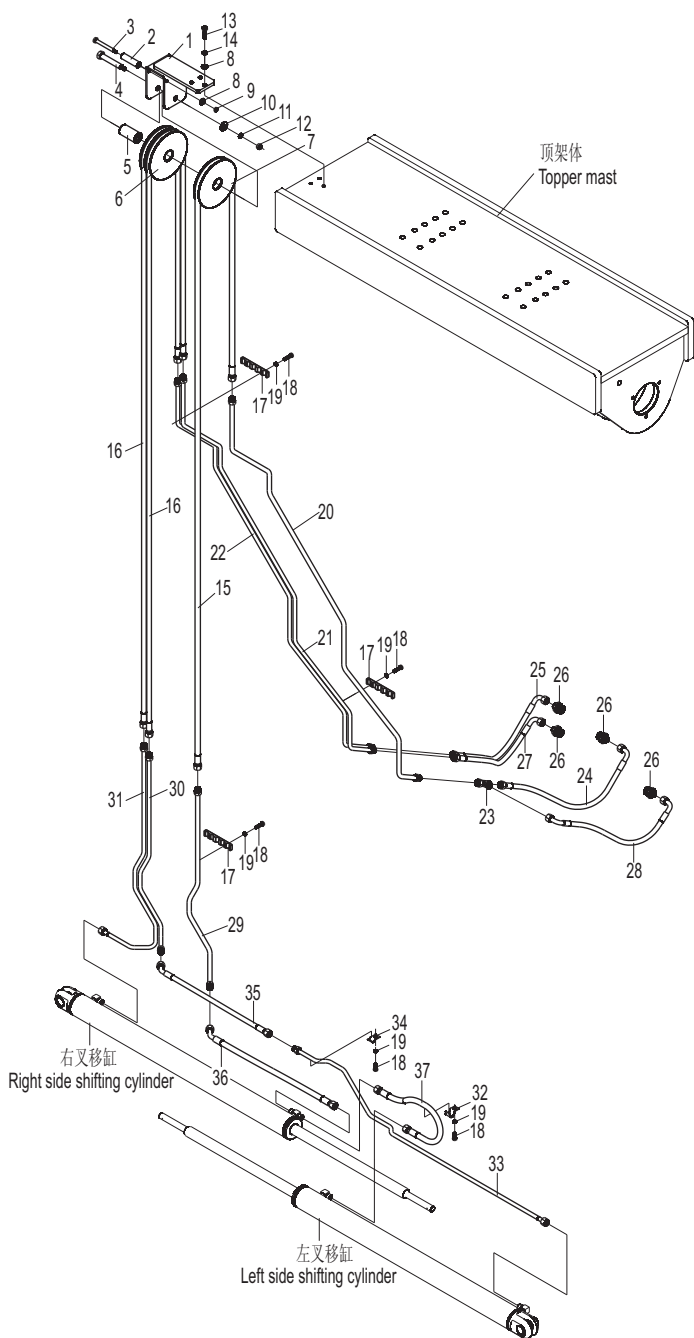
起升高度 (mm) Lifting height	3000	3300	3500	3700	4000	4500	5000	5500	6000	6500	6600	7000
件16滑轮胶管 Hose, chain wheel	2220	2520	2720	2920	3220	3720	4220	4720	5220	5720	5820	6220
编 码 Code	172720 02828	172720 02829	172720 02830	172720 02831	172720 02832	172720 02833	172720 02834	172720 02835	172720 02836	172720 02837	172720 02838	172720 02839

门架侧移管路系统(基本型) / Side shift pipe system (Normal mast)

序号 Item No	编 码 Code	图 号 Part No	零部件名称 Description	数量 Qty	备 注 Remark
1	30088089200	LG0160DT.10.13.01	滑轮架焊合 Bracket	1	
2	30088107405	LG0160DT.10.13-008	钢管 Tube	1	
3	51203102614	GB/T5782	螺栓M10X100 Bolt M10×100	1	
4	51203132814	GB/T5782	螺栓M16X120 Bolt M16×120	1	
5	30088107402	LG0160DT.10.13-005	钢管 Tube	1	
6	30088185200	LG0160DT.10.13-003	滑轮 Sheave	1	
7	30088185201	LG0160DT.10.13-004	滑轮 Sheave	1	
8	51421100115	GB/T97.1	垫圈10 Plain washer 10	4	
9	51347000419	GB/T6184	螺母M10 Nut M10	1	
10	51421130115	GB/T97.1	垫圈16 Plain washer 16	1	
11	51401130107	GB/T93	垫圈16 Spring lock washer 16	1	
12	51307001319	GB/T6170	螺母M16 Nut M16	1	
13	51204101214	GB/T5783	螺栓M10X30 Bolt M10×30	3	
14	51401100107	GB/T93	垫圈10 Spring lock washer 10	3	
15	17272002818	LG0160DT.10.12.01	胶管总成 Hose,high pressure	1	
16	17272002830	LG0160DT.10.12.02	胶管总成 Hose,high pressure	2	
17	30088107800	LG0160DT.10.12-001	管夹 Clip	3	
18	51204091114	GB/T5783	螺栓M8X25 Bolt M8×25	8	
19	51401090107	GB/T93	垫圈8 Spring lock washer 8	8	
20	60911013501	LG0160DT.10.12.03	钢管焊合 Tube weldment	1	
21	60911013502	LG0160DT.10.12.04	钢管焊合 Tube weldment	1	
22	60911013503	LG0160DT.10.12.05	钢管焊合 Tube weldment	1	
23	17601000900	LG0160DT.10.12.06	过渡接头 Adapter	1	
24	17272002840	LG0160DT.10.12.07	胶管总成 Hose,high pressure	1	
25	17272002841	LG0160DT.10.12.08	胶管总成 Hose,high pressure	1	
26	17601000223	LG0160DT.10.12-004	过渡接头 Joint	4	
27	17272002842	LG0160DT.10.12.09	胶管总成 Hose,high pressure	1	
28	17272002843	LG0160DT.10.12.10	胶管总成 Hose,high pressure	1	
29	60911013504	LG0160DT.10.12.11	钢管焊合 Tube weldment	1	
30	60911013505	LG0160DT.10.12.12	钢管焊合 Tube weldment	1	
31	60911013506	LG0160DT.10.12.13	钢管焊合 Tube weldment	1	
32	30088107801	LG0160DT.10.12-005	管夹 Clip	1	
33	60911013507	LG0160DT.10.12.14	钢管焊合 Tube weldment	1	
34	30088107802	LG0160DT.10.12-006	管夹 Clip	1	
35	17272005327	LG0160DT.10.12.15	胶管总成 Hose,high pressure	1	
36	17272005328	LG0160DT.10.12.16	胶管总成 Hose,high pressure	1	

门架侧移管路系统(基本型) / Side shift pipe system(normal mast)

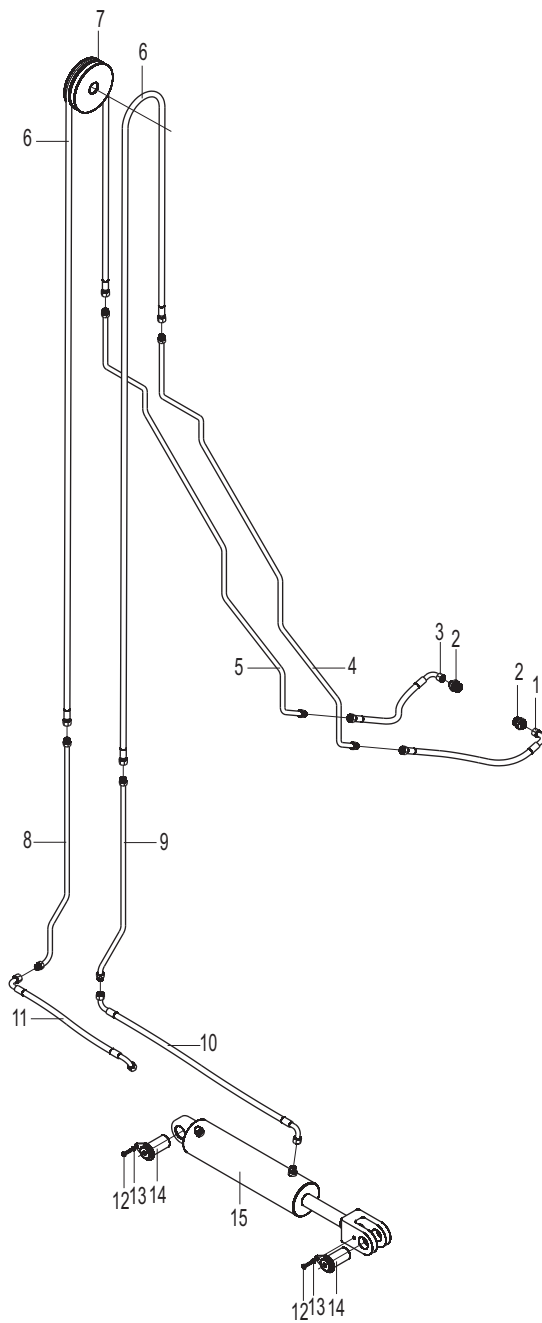
LG160DT



起升高度(mm) Lifting height	3000	3300	3500	3700	4000	4500	5000	5500	6000	6500	6600	7000
件16滑轮胶管 Hose, chain wheel	2220	2520	2720	2920	3220	3720	4220	4720	5220	5720	5820	6220
编 码 Code	172720 02828	172720 02829	172720 02830	172720 02831	172720 02832	172720 02833	172720 02834	172720 02835	172720 02836	172720 02837	172720 02838	172720 02839

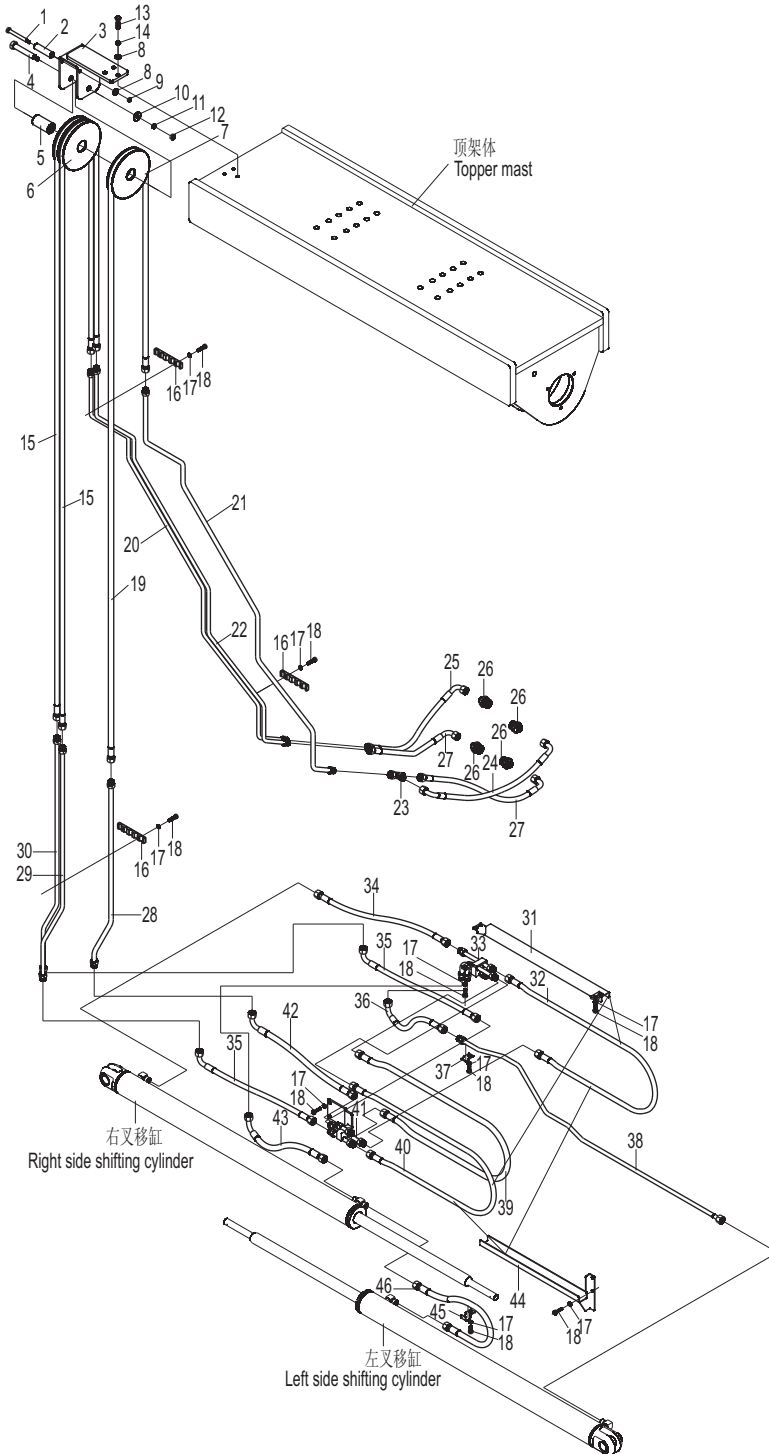
门架侧移管路系统/Side shift pipe system

LG160DT



门架叉移管路系统/Side shift pipe system

LG160DT

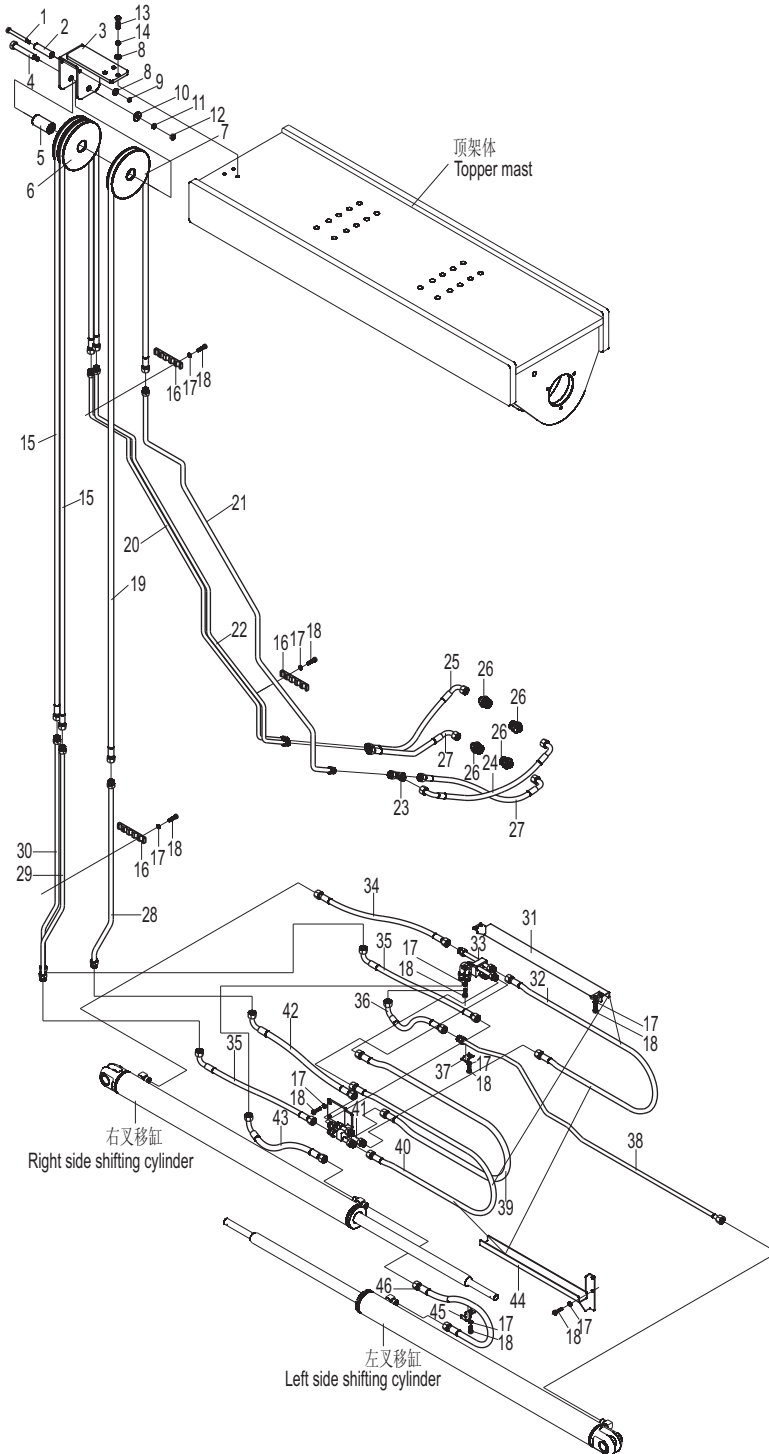


门架叉移管路系统/Side shift pipe system

序号 Item No	编 码 Code	图 号 Part No	零部件名称 Description	数量 Q'ty	备 注 Remark
1	51139222205	GB/T70.1	螺钉M10X150 Bolt M10×150	1	
2	30088107401	LG0160DT.10A.05-006	钢管 Tube	1	
3	30088089201	LG0160DT.10A.05.01	滑轮架焊合 Bracket	1	
4	51203133414	GB/T5782	螺栓M16X160 Bolt M16×160	1	
5	30088107406	LG0160DT.10A.05-009	钢管 Tube	1	
6	30088185200	LG0160DT.10.13-003	滑轮 Sheave	1	
7	30088185201	LG0160DT.10.13-004	滑轮 Sheave	1	
8	51421100115	GB/T97.1	垫圈10 Plain washer 10	4	
9	51347000419	GB/T6184	螺母M10 Nut M10	1	
10	51421130115	GB/T97.1	垫圈16 Plain washer 16	1	
11	51401130107	GB/T93	垫圈16 Spring lock washer 16	1	
12	51307001319	GB/T6170	螺母M16 Nut M16	1	
13	51204101214	GB/T5783	螺栓M10X30 Bolt M10×30	3	
14	51401100107	GB/T93	垫圈10 Spring lock washer 10	3	
15	17272002830	LG0160DT.10.12.02	胶管总成 Hose,high pressure	2	
16	30088107800	LG0160DT.10.12-001	管夹 Clip	3	
17	51401090107	GB/T93	垫圈8 Spring lock washer 8	18	
18	51204091114	GB/T5783	螺栓M8X25 Bolt M8×25	18	
19	17272002818	LG0160DT.10.12.01	胶管总成 Hose,high pressure	1	
20	60911013503	LG0160DT.10.12.05	钢管焊合 Tube assembly	1	
21	60911013513	LG0160DT.10A.04.01	钢管焊合 Tube assembly	1	
22	60911013502	LG0160DT.10.12.04	钢管焊合 Tube assembly	1	
23	17601000900	LG0160DT.10.12.06	过渡接头 Adapter	1	
24	17272005336	LG0160DT.10A.04.02	胶管总成 Hose,high pressure	1	
25	17272005337	LG0160DT.10A.04.04	胶管总成 Hose,high pressure	1	
26	17601000223	LG0160DT.10.12-004	过渡接头 Adapter	1	
27	17272005343	LG0160DT.10A.04.03	胶管总成 Hose,high pressure	2	
28	60911013514	LG0160DT.10A.04.05	钢管焊合 Tube assembly	1	
29	60911013515	LG0160DT.10A.04.06	钢管焊合 Tube assembly	1	
30	60911013516	LG0160DT.10A.04.07	钢管焊合 Tube assembly	1	
31	30088089501	LG0160DT.10A.04.19	胶管滑道焊合 Bracket	1	
32	17272005339	LG0160DT.10A.04.09	胶管总成 Hose,high pressure	1	
33	60911013517	LG0160DT.10A.04.11	过渡六通 Six way adapter	1	
34	17272005341	LG0160DT.10A.04.12	胶管总成 Hose,high pressure	1	
35	17272005345	LG0160DT.10A.04.16	胶管总成 Hose,high pressure	2	
36	17272005342	LG0160DT.10A.04.13	胶管总成 Hose,high pressure	1	

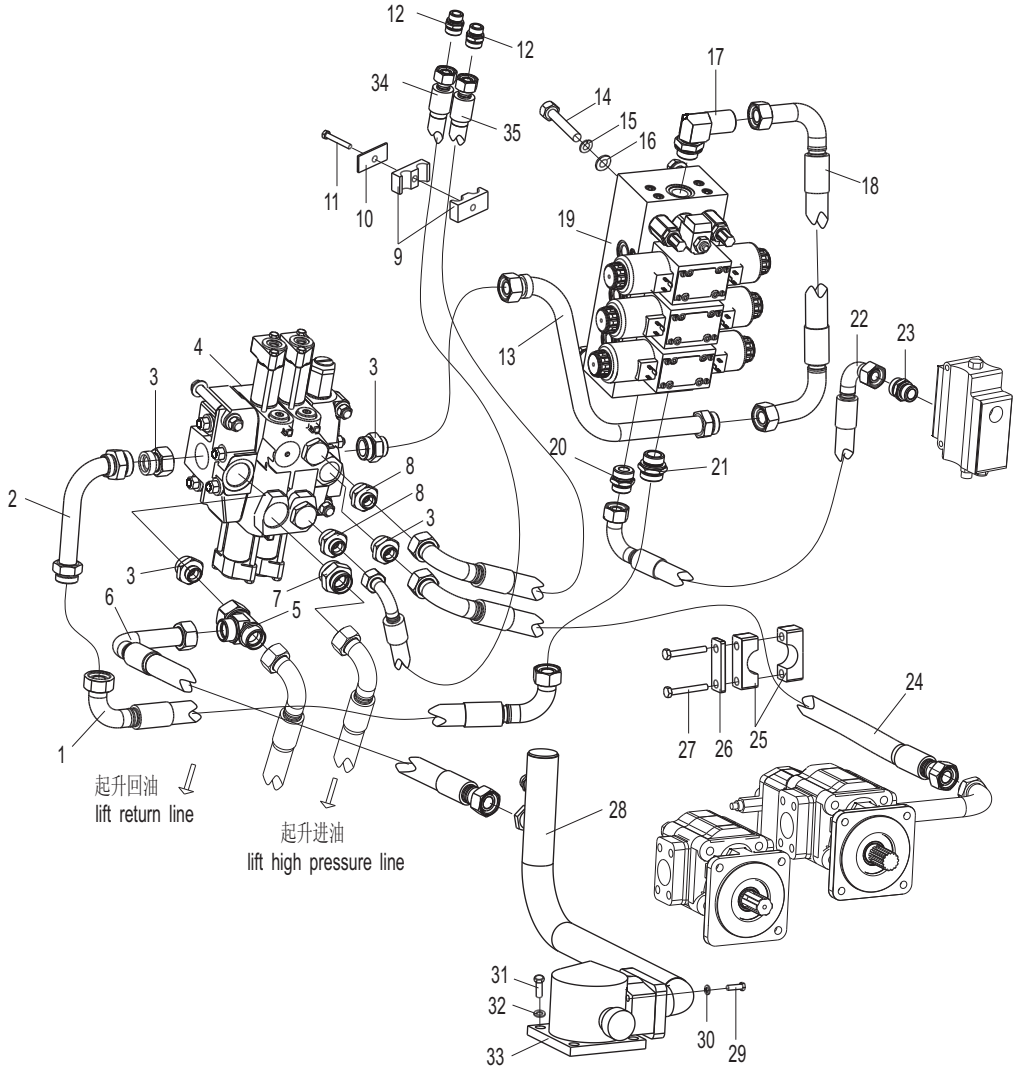
门架叉移管路系统/Side shift pipe system

LG160DT



多路阀管路/Multi-way valve pipe system

LG160DT

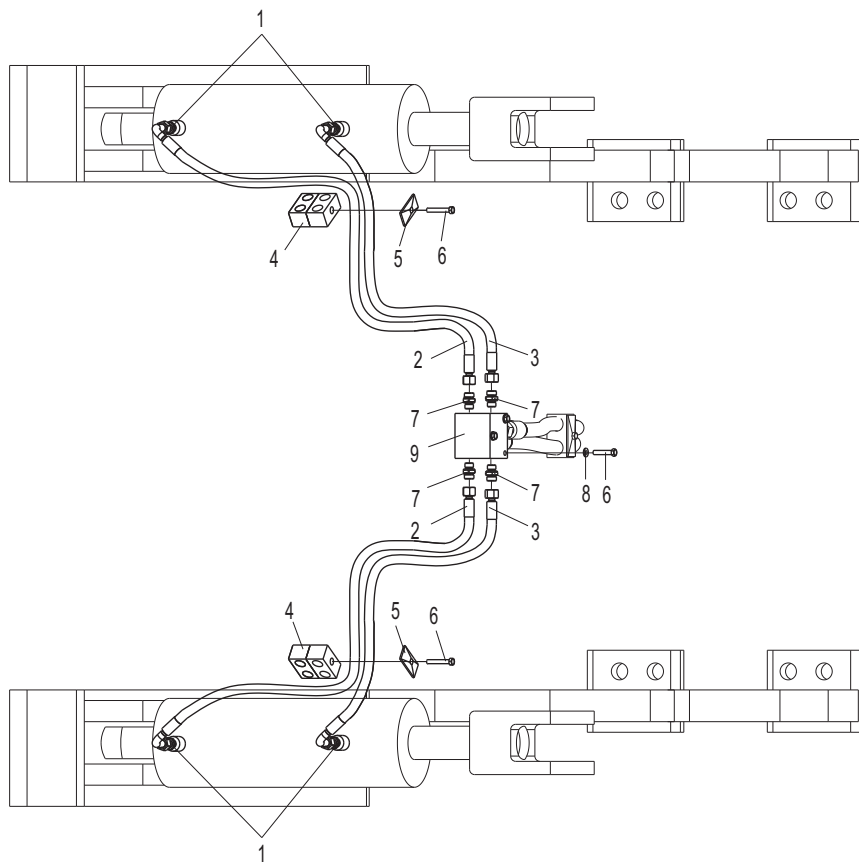


多路阀管路/Multi-way valve pipe system

序号 Item No	编 码 Code	图 号 Part No	零部件名称 Description	数量 Q'ty	备 注 Remark
1	17272001948	LG0160DT.12.20	胶管总成 Hose,high pressure	1	
2	30012013032	LG0160DT.12.32	钢管焊接 Tube weldment	1	
3	17601000375	LG0260DT.12.82	过渡接头 Adapter	4	
4	60304100019	LG0160DT.12.01	多路阀 Multi-way Valve	1	
5	17601000907	LG0160DT.12.28	过渡接头 Adapter	1	
6	17272001914	LG0160DT.12.29	胶管总成 Hose,high pressure	1	
7	17601000371	LG0160DT.12.69	过渡接头 Adapter	1	
8	17601000368	LG0160DT.12.26	过渡接头 Adapter	2	
9	60911010479	LG0160DT.12.68	管夹 Clip	1	
10	30012107903	LG0160DT.12-011	管夹盖板 Cover plate	1	
11	51203091814	GB/T5782	螺栓M8X60 Bolt M8×60	1	
12	17601000251	LG0160DT.12.67	过渡接头 Adapter	2	
13	30012013033	LG0160DT.12.19	钢管焊接 Tube weldment	1	
14	51204133314	GB/T5783	螺栓M16X50 Bolt M16×50	4	
15	51401130107	GB/T93	垫圈16 Spring lock washer 16	4	
16	51421130115	GB/T97.1	垫圈16 Plain washer 16	4	
17	17601000313	LG0160DT.12.15	过渡接头 Adapter	1	
18	17272001966	LG0160DT.12.16	胶管总成 Hose,high pressure	1	
19	60304100015	LG0160DT.12.78	电磁换向阀 Electric valve	1	
20	17601000268	LG0160DT.12.41	过渡接头 Adapter	1	
21	17601000272	LG0160DT.12.18	过渡接头 Adapter	1	
22	17272001942	LG0160DT.12.71	胶管总成 Hose,high pressure	1	
23	17601000263	LG0160DT.12.46	过渡接头 Adapter	2	
24	17272001923	LG0160DT.12.23	胶管总成 Hose,high pressure	1	
25	60911010471	LG0160DT.12.64	管夹 Clip	1	
26	30012107900	LG0160DT.12-002	管夹盖板 Cover plate	2	
27	51202102114	GB/T5782	螺栓M10X75 Bolt M10×75	4	
28	30012013306	LG0160DT.12.31	钢管总成 Tube weldment	1	
29	51204101314	GB/T5783	螺栓M10X35 Bolt M10×35	4	
30	51401100107	GB/T93	垫圈10 Spring lock washer 10	28	
31	51204111214	GB/T5783	螺栓M12X30 Bolt M12×30	4	
32	51401110107	GB/T93	垫圈12 Spring lock washer 12	20	
33	30012023300	LG0160DT.12.30	滤油器总成 Return line filter	1	
34	17272001898	LG0160DT.12.24	胶管总成 Hose,high pressure	1	
35	17272001897	LG0160DT.12.25	胶管总成 Hose,high pressure	1	

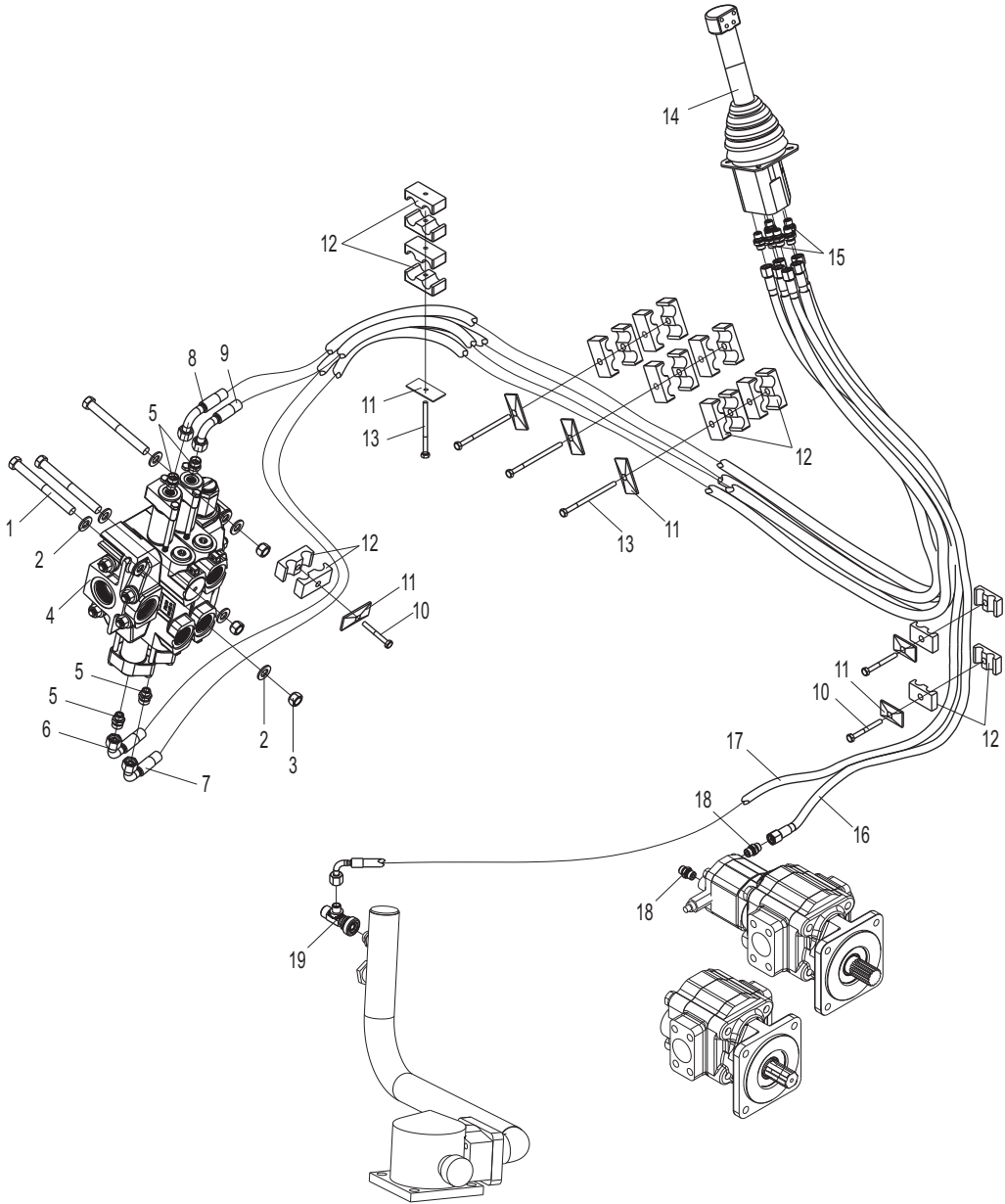
功能管路/Function pipe system

LG160DT



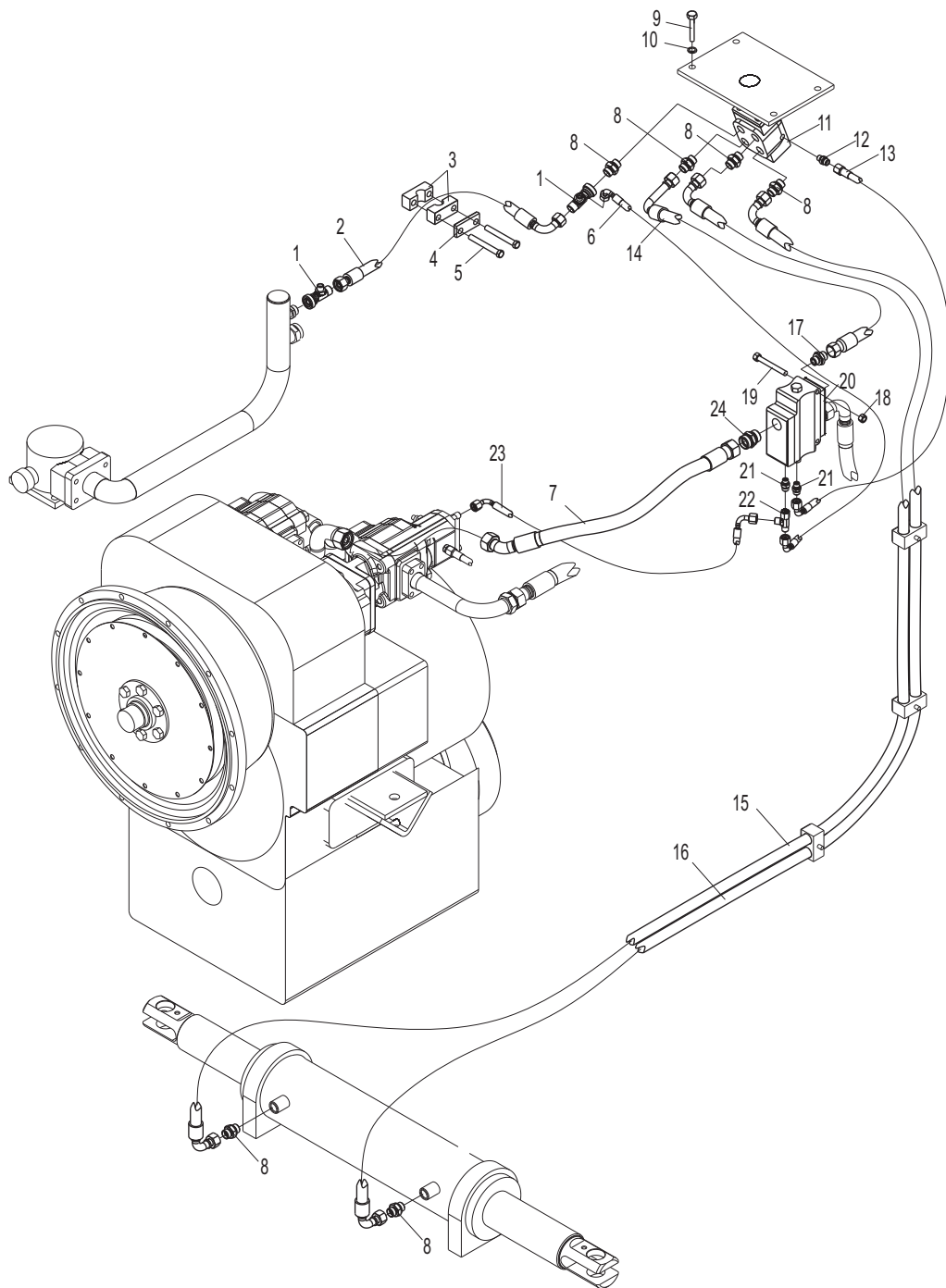
液压操控管路/Hydraulic control pipe system

LG160DT



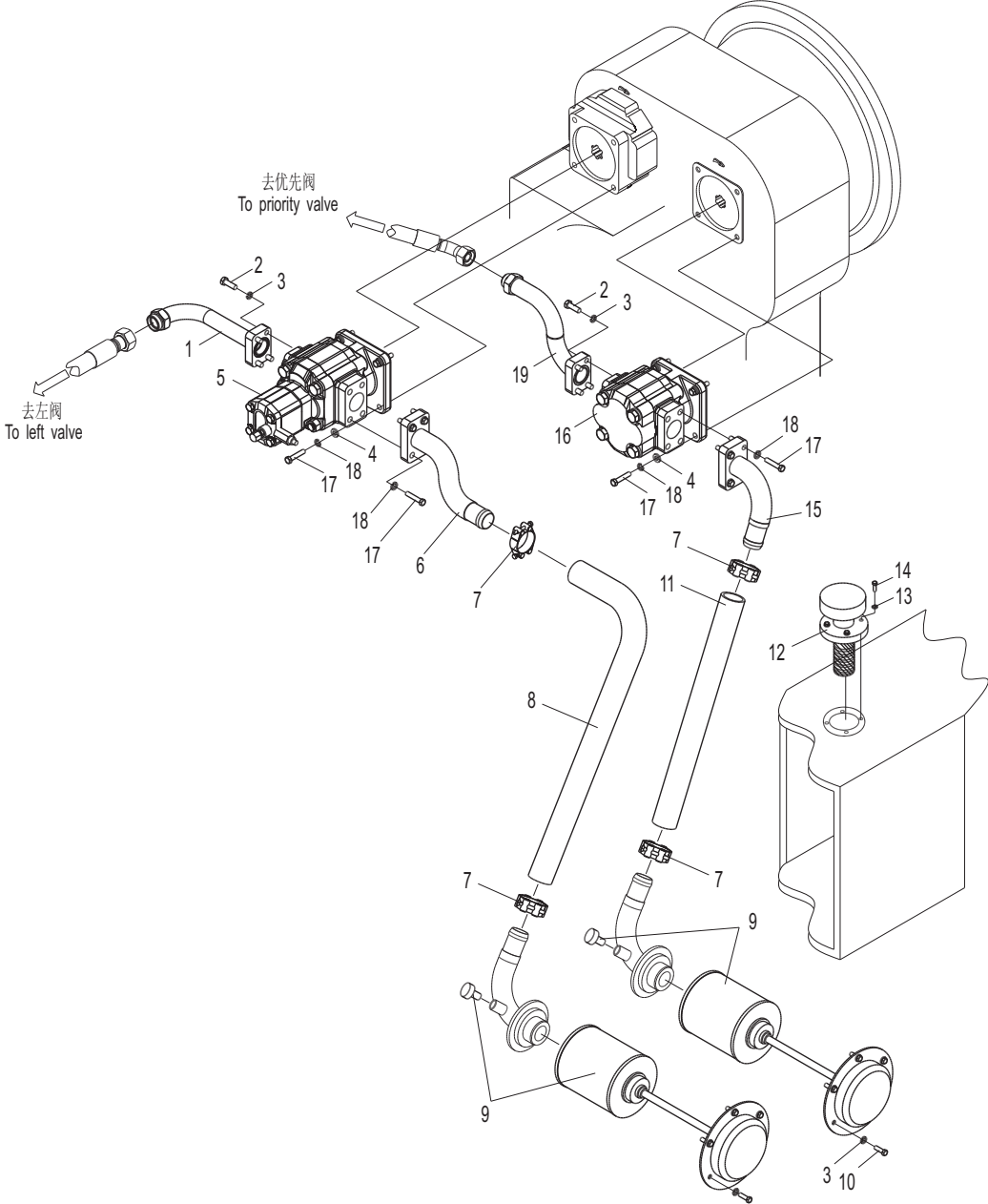
转向管路/Steering pipe system

LG160DT



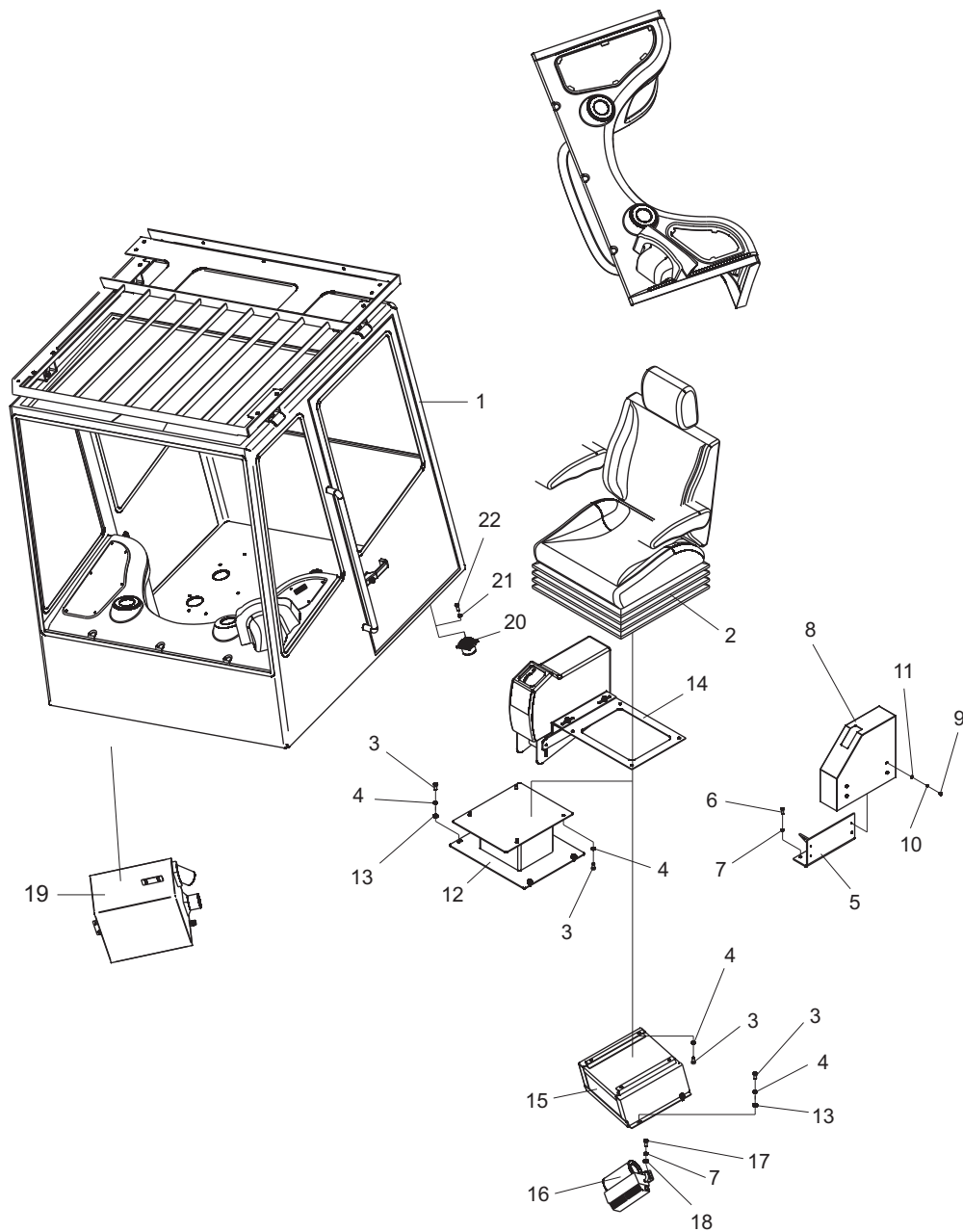
泵管路/Pump pipe system

LG160DT



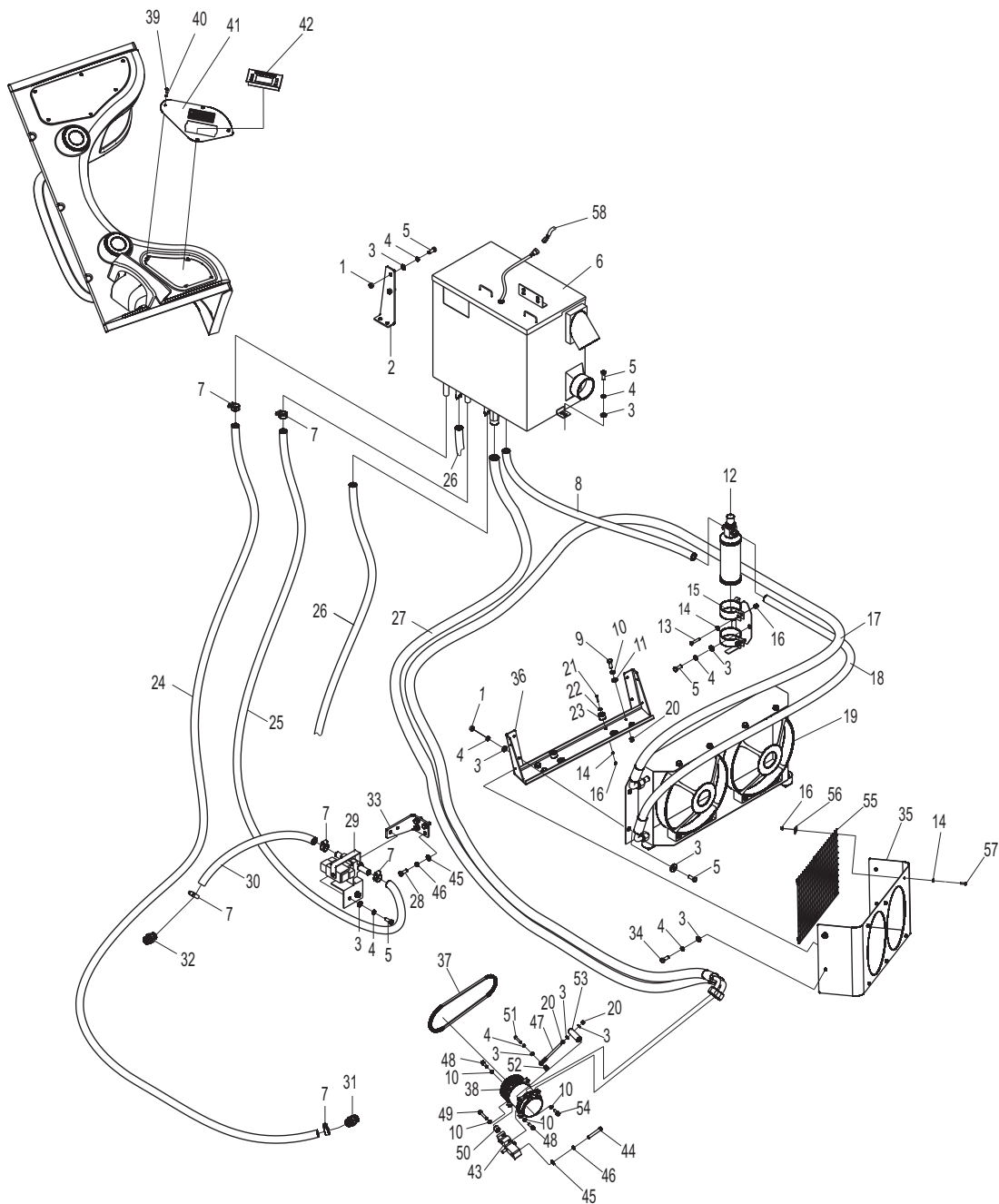
驾驶室系统/Cab system

LG160DT



空调系统（选配） / Air-condition system(optional)

LG160DT

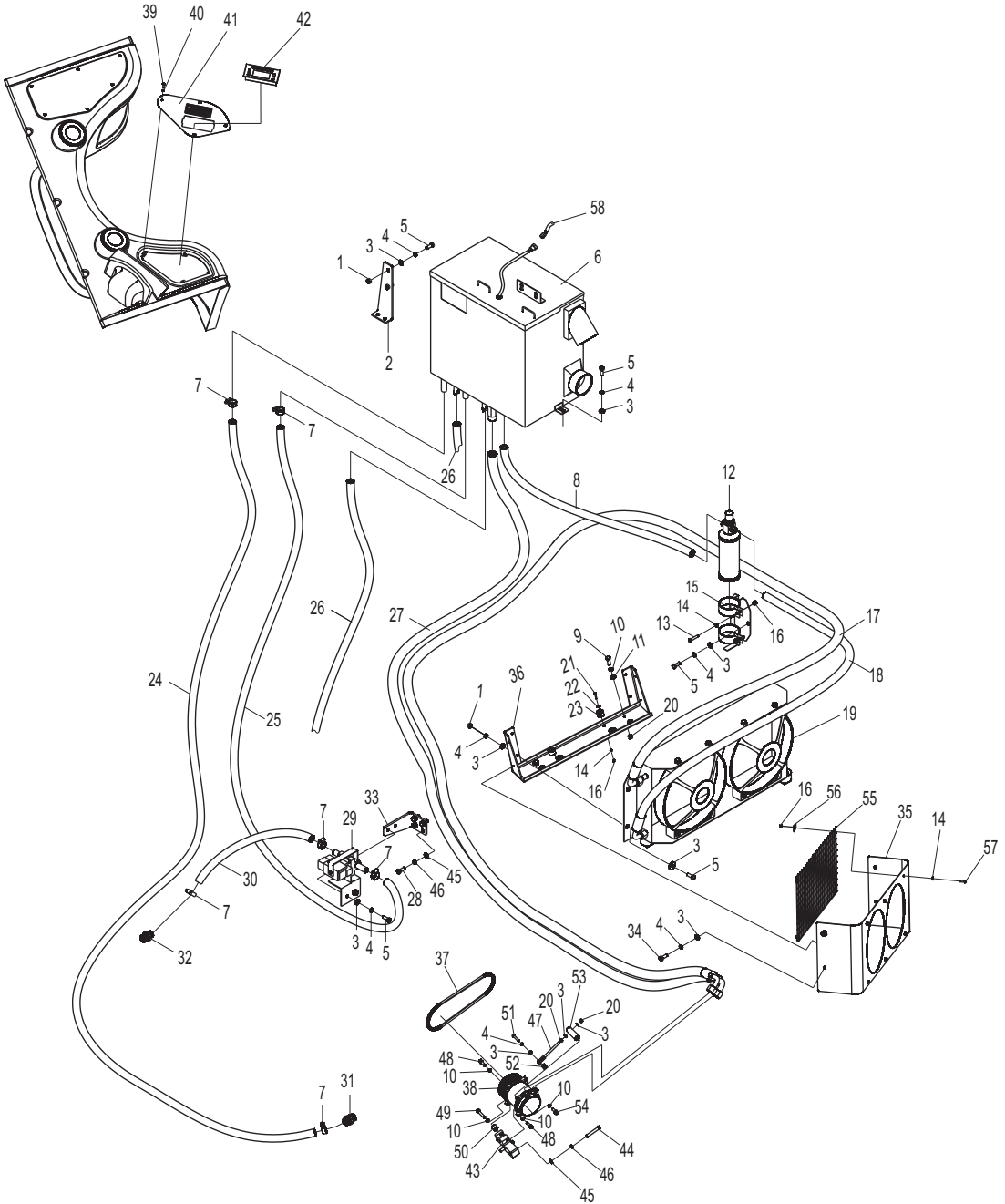


空调系统（选配） / air-condition system(optional)

序号 Item No	编 码 Code	图 号 Part No	零 部 件 名 称 Description	数 量 Q'ty	备 注 Remark
1	51307000919	GB/T6170	螺母M8 Nut M8	6	
2	33001018108	LG0420FC.01.05.01	支架焊合 Bracket weldment	1	
3	51421090115	GB/T97.1	垫圈8 Plain washer 8	22	
4	51401090107	GB/T93	垫圈8 Spring lock washer 8	16	
5	51204091014	GB/T5783	螺栓M8X20 Bolt M8×20	11	
6	33001018001	LG0420FC.01.05.04	蒸发器 Evaporator	1	
7	56171000301	JB/T8870	喉箍d32(20~32) Clip d32(20~32)	6	
8	30014014501	LG0160DT.14.07.02	胶管总成 Hose assembly	1	
9	51204101114	GB/T5783	螺栓M10X25 Bolt M10×25	4	
10	51401100107	GB/T93	垫圈10 Spring lock washer 10	8	
11	51421100115	GB/T97.1	垫圈10 Plain washer 10	4	
12	33001018800	LG0260DT.01.05.06	贮液器总成 Accumulator bracket	1	
13	51204081214	GB/T5783	螺栓M6X30 Bolt M6×30	2	
14	51421080115	GB/T97.1	垫圈6 Plain washer 6	12	
15	33001018501	LG0260DT.01.05.07	贮液器支架 Accumulator bracket	1	
16	51341000419	GB/T889.1	螺母M6 Nut M6	12	
17	30014014502	LG0160DT.14.07.03	胶管总成 Hose assembly	1	
18	30014014503	LG0160DT.14.07.06	胶管总成 Hose assembly	1	
19	33001014900	LG0260DT.01.05.08	冷凝器总成 Condensator assembly	1	
20	51307001019	GB/T6170	螺母M10 Nut M10	6	
21	51204081314	GB/T5783	螺栓M6X35 Bolt M6×35	4	
22	51420080121	GB/T96.1	垫圈6 Plain washer 6	4	
23	33001109001	LG0260DT.01.05.004	减震垫 Absorber	4	
24	30014109201	LG0160DT.14.07.001	胶管 Hose	1	
25	30014109202	LG0160DT.14.07.002	胶管 Hose	1	
26	33001109215	LG0260DT.01.05.005	胶管 Hose	2	
27	30014014500	LG0160DT.14.07.01	胶管总成 Hose assembly	1	
28	51204111114	GB/T5783	螺栓M12X25 Bolt M12×25	4	
29	33001010900	LG0260DT.01.05.11	50G电磁阀 50G electromagnetic valve	1	
30	30014109203	LG0160DT.14.07.004	胶管 Hose	1	
31	17601001146	LG0160DT.14.07.005	过渡接头 Intergrade tie-in	1	
32	17601001147	LG0160DT.14.07.007	过渡接头 Intergrade tie-in	1	
33	30014115029	LG0160DT.14.07.003	支架 Bracket	1	
34	51204090914	GB/T5783	螺栓M8X16 Bolt M8×16	4	
35	30014108700	LG0160DT.14.07.008	护罩 Shield	1	
36	30014018108	LG0160DT.14.07.05	支架焊合 Bracket, weldment	1	

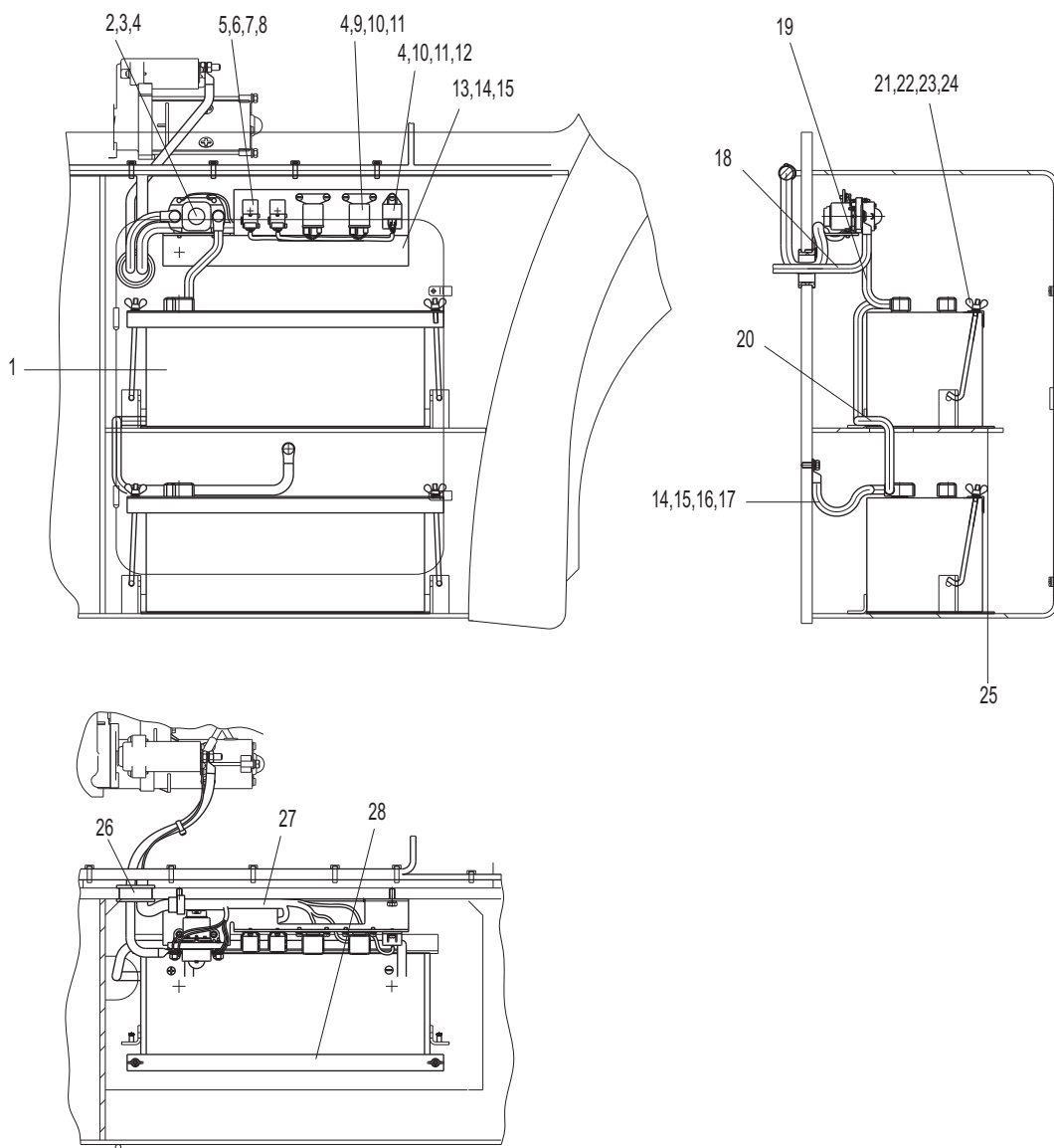
空调系统（选配） / Air-condition system(optional)

LG160DT



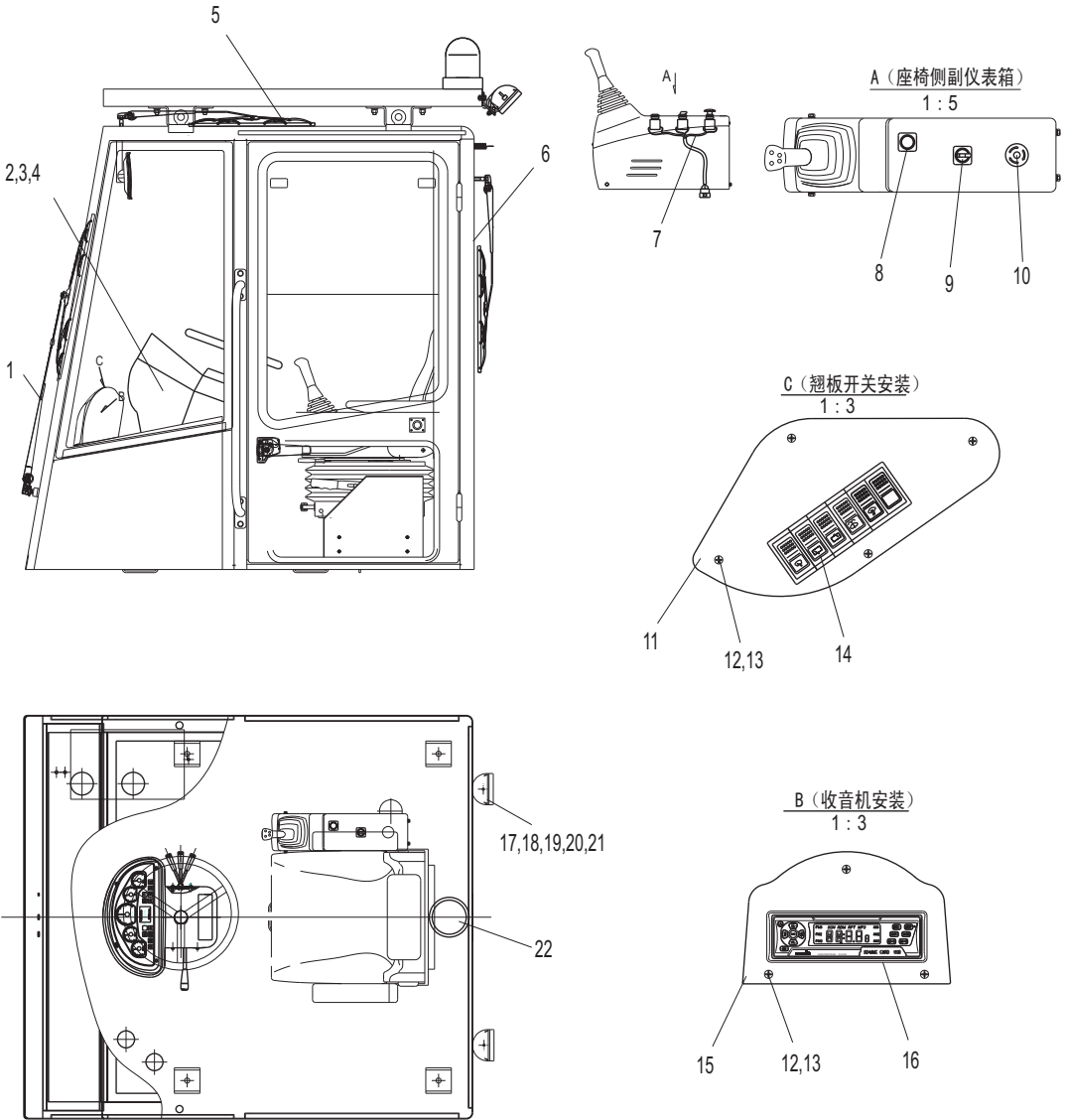
电器元件总成 / Electric element assembly

LG160DT



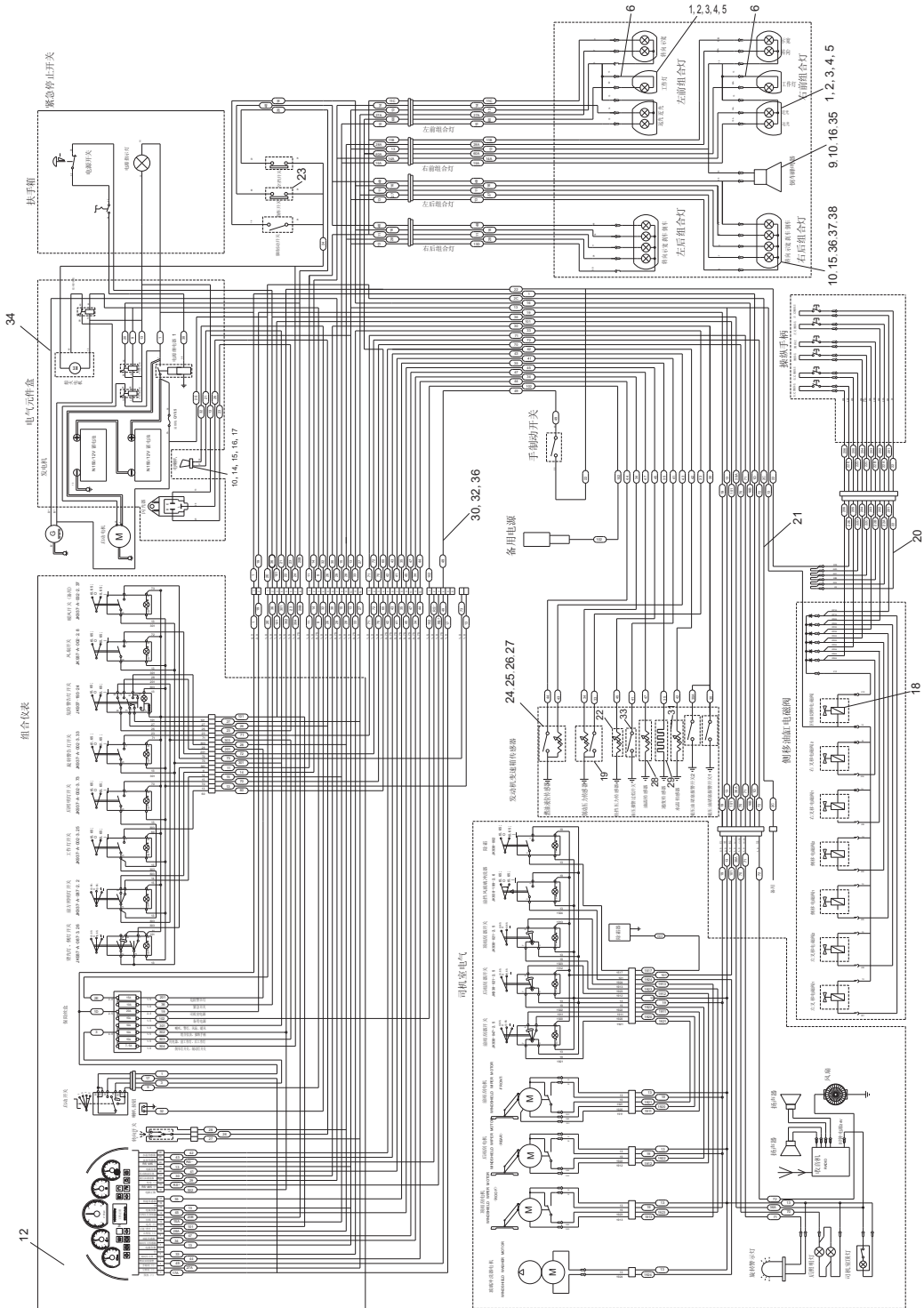
驾驶室电器元件总成/Electric element assembly of cab

LG160DT



电气系统/Electric system

LG160DT

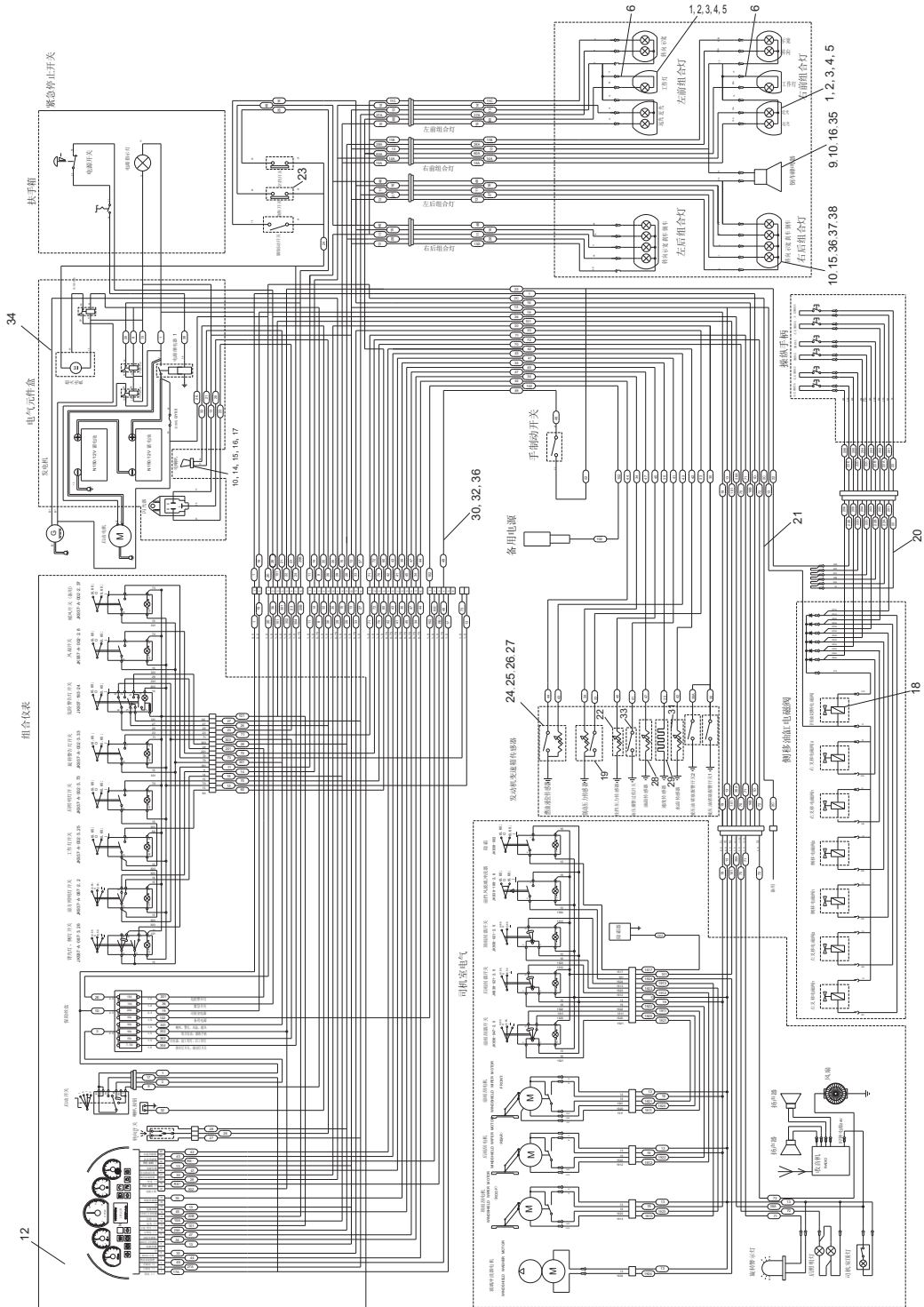


电气系统/Electric system

序号 Item No	编 码 Code	图 号 Part No	零 部 件 名 称 Description	数量 Q'ty	备 注 Remark
1	33015064201	LG0260DT.15.01-001	工作灯 Head lamp	2	
2	30015115008	LG0160DT.15-001	支架 Front lamp	2	
3	30015161000	LG0160DT.15-002	固定架 Lamp switchh	2	
4	51204080814	GB/T5783	螺栓M6X12 Combination M/T	4	
5	51401080107	GB/T93	垫圈6 Bolt M6×30	4	
6	30015061313	LG0160DT.15.01	灯具线束 Washer 6	2	
7	30015067104	LG0160DT.15-003	前组合灯 Start up switch	1	
8	30015061201	LG0160DT.15.02	灯架焊合 Turning switch	2	
9	51204090914	GB/T5783	螺栓M8X16 Horn	8	
10	51401090107	GB/T93	垫圈8 Bolt M8×20	8	
11	30015067105	LG0160DT.15-004	前组合灯 Spring lock washer 8	1	
12	30015065100	LG0160DT.15.03	驾驶室电器元件总成 Plain washer 8	1	
13	30015061314	LG0160DT.15.04	灯具线束 Nut M8	2	
14	60401050090	LG0100DT.15-001	喇叭 Warning lamp switch	1	
15	51203091014	GB/T5782	螺栓M8X20 Headguard harness	5	
16	51421090115	GB/T97.1	垫圈8 Break light switch	2	
17	51307000919	GB/T6170	螺母M8 Vacuum annunciator	1	
18	33015160600	LG0260DT.15.01-009	电磁阀插件 Vacuum sensor	6	
19	30015163205	LG0160DT.15-005	压力传感器 Air purifier sensor	1	
20	30015060400	LG0160DT.15.05	操纵手柄线束 Back alarm buzzer	1	
21	30015061013	LG0160DT.15.06	车体线束 Spring lock washer 6	1	
22	30015163207	LG0160DT.15-012	压力传感器 Electric cable	1	
23	30015163206	LG0160DT.15-006	压力传感器 Battery box	1	
24	30015163601	LG0160DT.15-007	油量传感器 Electric cable	1	
25	51118170603	GB/T67	螺钉M5X16 Fuse	5	
26	51401070107	GB/T93	垫圈5 Electric cable	5	
27	51421070115	GB/T97.1	垫圈5 Electrical source switch	5	
28	30015163701	LG0160DT.15-008	油温传感器 Rear combined lamp	1	
29	30015162100	LG0160DT.15-009	速度传感器 Warning lamp	1	
30	30015061014	LG0160DT.15.07	车体线束 Screw M6×12	1	
31	30015162003	LG0160DT.15-011	水温传感器 Plate weldment	1	
32	60980000547	30D-1500001	扎带4X300 Electronic adjuster	40	
33	30015163204	LG0160DT.15-010	压力传感器 Starting relay	1	
34	30015062303	LG0160DT.15.08	电器元件总成 Flasher unit	1	
35	60401050091	LG0100DT.15-012	倒车蜂鸣器 Fuse box assembly	1	
36	60980000346	LG0060DT.03.02.04	扎带4X150 Screw M5×12	20	

电气系统/Electric system

LG160DT



标牌/Decal

LG160DT

